



**1302 Eldorado Drive, Superior CO**



4 bedrooms



3 baths



3,481 sq.ft.



3 car garage



Walkout basement finish included



Elevation shown is flipped - garage will be built on left side of home

Base Price - \$1.82 million

## UPSCALE PRAIRIE: DISTINCT BY DESIGN



Text or call for more information

**NICOLE O'NEILL**

720-734-3905

## 1302 Eldorado Drive, Superior CO

---

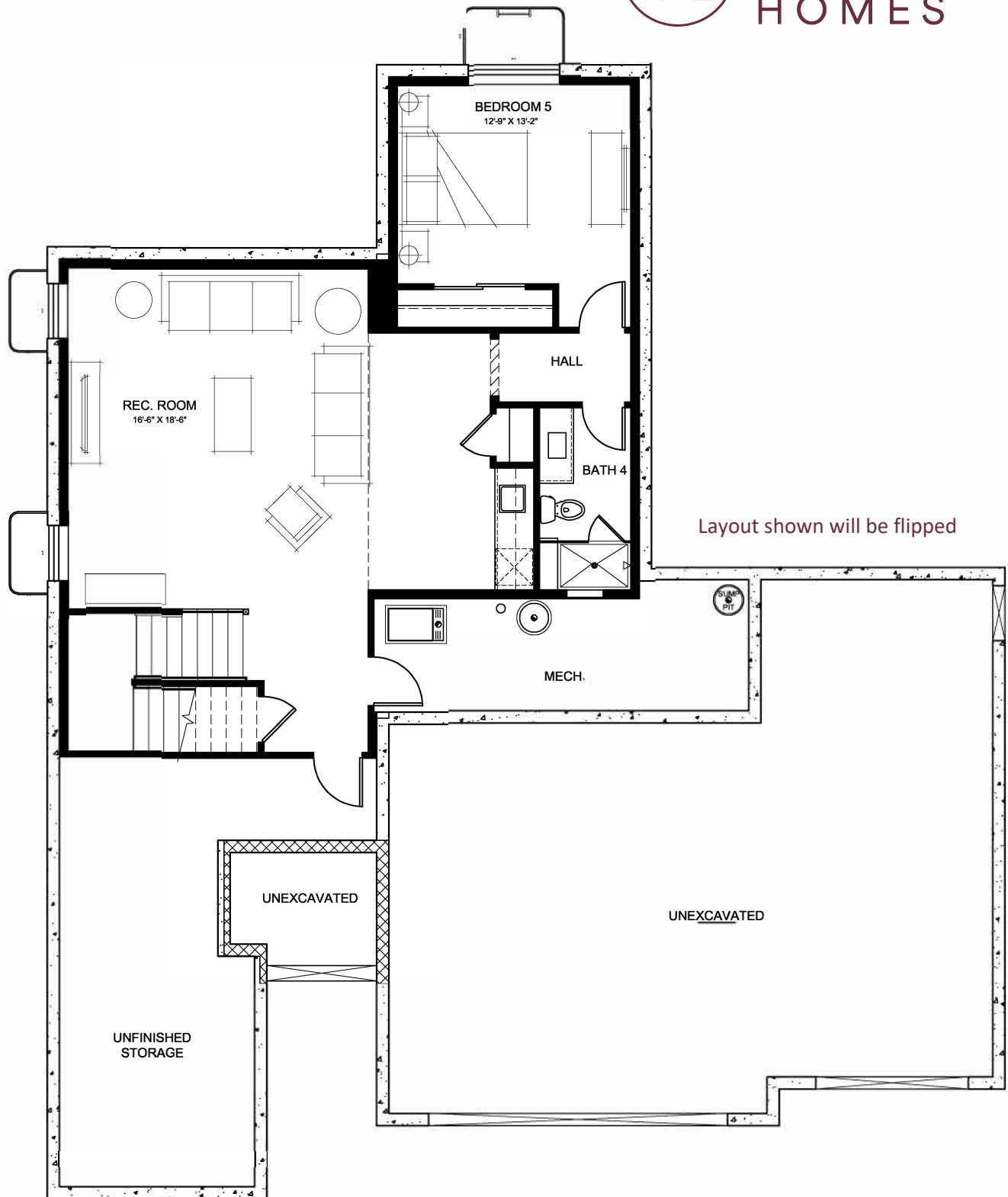
- 2-story open concept design with spectacular mountain views
- High-end finishes throughout
- Spacious owner's entry offers convenience with double closet, and direct access to back kitchen and oversized walk-in pantry
- Gracious entry off of large covered porch gives unbroken sight line to great room windows
- Classic turned staircase features large landing and open handrail on both sides
- Gas fireplace in great room adds style and ambiance
- Lavish kitchen appointed with top-of-the-line appliances, large island, and dining area surrounded by windows
- Full bath on main level situated with convenient access to 4th bedroom
- Palatial 2nd-story primary suite with generous spa-like bath and private access to deck
- Spacious secondary bedrooms with Jack-and-Jill bathroom
- Finished walkout basement adds 871 sq. ft. of living space with rec room, wet bar, bedroom, and full bath
- Build with EnergyStar 3.2 rated specifications for top efficiency
- Sheffield pays 2.8% buyer agent fee on base price of home



COLORADO ROOTS | CUSTOMER DRIVEN

For nearly fifty years, Sheffield Homes has been crafting custom homes that reflect the unique needs and lifestyles of our clients. Serving the Denver Metro and surrounding areas, our team of experienced builders and designers work with you every step of the way to ensure that your home is truly a reflection of you. Our commitment to quality, transparency, and customer satisfaction is what sets us apart.

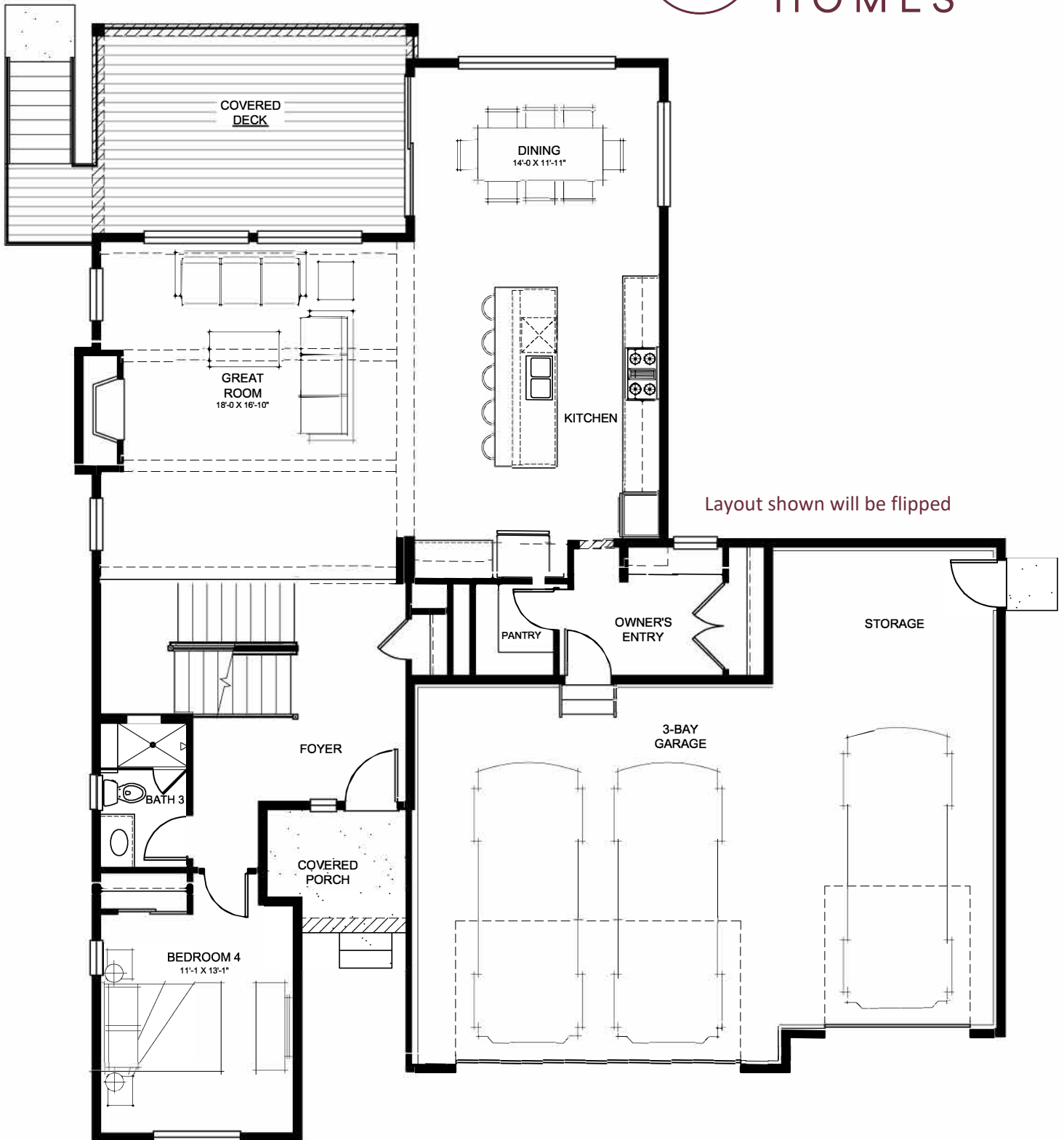
**We speak the language of Luxury.**



**LOWER LEVEL FLOOR PLAN**

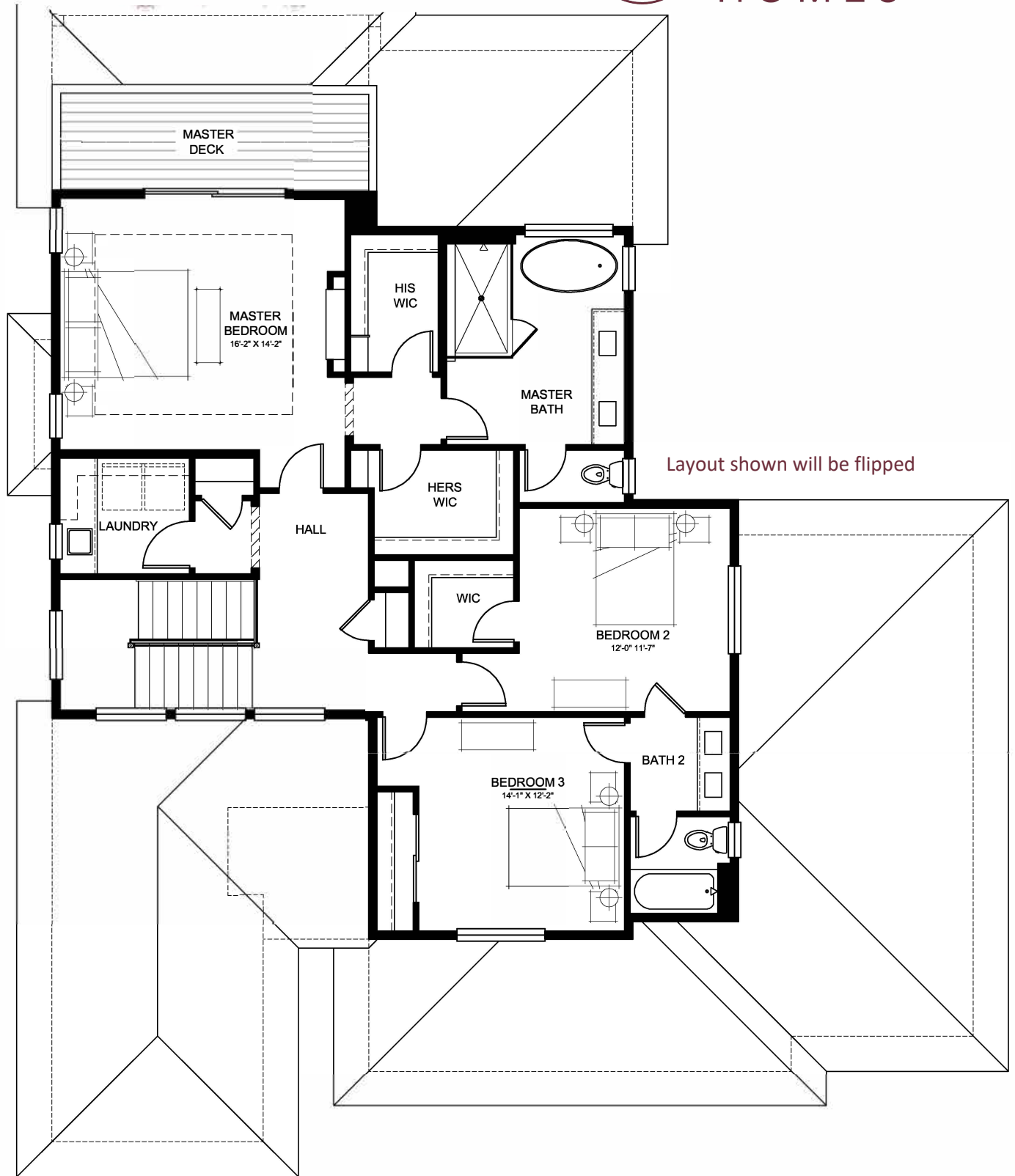
871 SQ. FT.





MAIN LEVEL FLOOR PLAN

1,409 SQ. FT.



**UPPER LEVEL FLOOR PLAN**

**1,201 SQ. FT.**