








30 Snow Ridge Drive, Tabernash, CO

-  4 -5 bedrooms
-  4 1/2 baths (optional 5th)
-  4,027 sq.ft.
-  3 car garage
-  Finished basement included

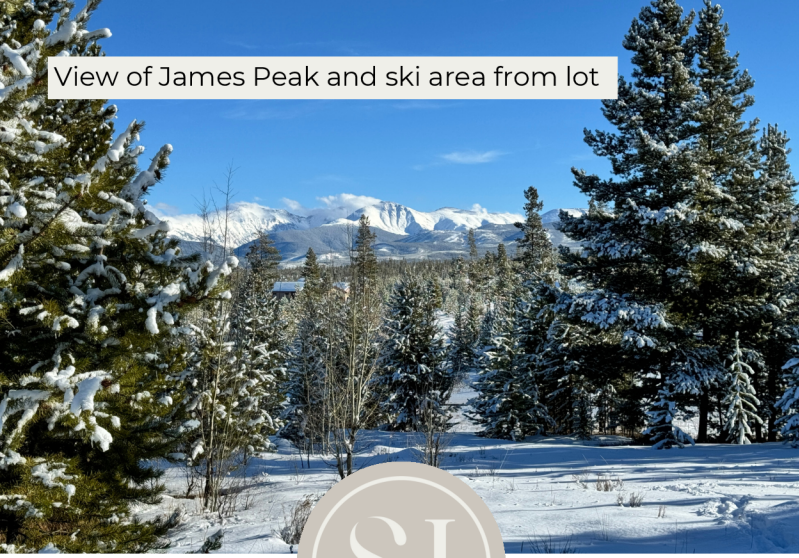
Under \$3 million

PREMIUM VIEWS
UNDERSTATED LUXURY



Text or call for more information
NICOLE O'NEILL
720-830-2495

View of James Peak and ski area from lot



View of Indian Peaks from lot

30 Snow Ridge Drive, Tabernash, CO

- Sprawling ranch design with finished walk-out basement
- Optional 5th bedroom and 5th full bath ensures comfort for family and overnight guests
- Oversized living areas on both main and lower levels
- Large decks and patios extend living space outdoors
- Lutron motorized custom window shades
- Built-in gas firepit, plumbed gas line for grill, and lower-deck hot tub plumbing and electrical
- Gas fireplaces in main-level great room, lower-level rec room, and owner's retreat add warmth and ambiance
- Lavish kitchen appointed with top-of-the-line appliances, large island, and dining area surrounded by 180° views
- Use flex room with attached bath off of kitchen for office, gaming, hobbies, or additional guest space
- Oversized mudroom with built-in cubbies conveniently stores seasonal gear
- Insulated garage door protects against the elements
- Lower level wet bar with wine cabinets
- Build with EnergyStar 3.2 rated specifications for top efficiency
- Buyer to select interior colors
- Offering a buyers' agent fee



Sheffield HOMES

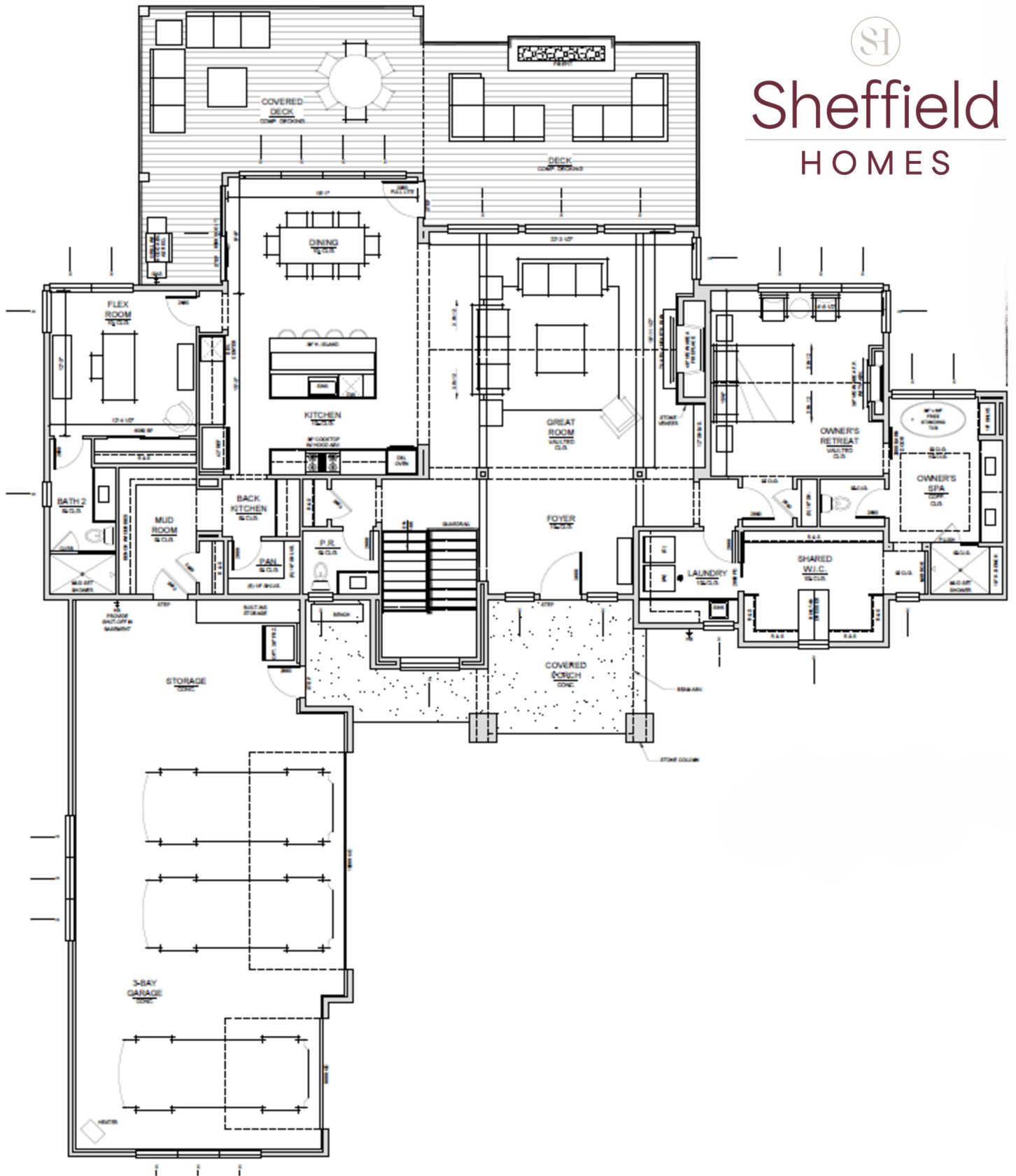
COLORADO ROOTS | CUSTOMER DRIVEN

If mountain living speaks to your soul, here's your opportunity to live surrounded by the unparalleled splendor of Colorado's Rocky Mountains. With unobstructed views of Devils Thumb in the Indian Peaks Wilderness area and the soaring majesty of James Peak, the 2.3 acre walk-out lot creates an idyllic setting for this beautiful 4,027 sq. ft. home. And better yet? Close proximity to Winter Park ski area (11.3 miles) means you'll never sit in weekend traffic on I-70 again.

We speak the language of Luxury.



Sheffield HOMES

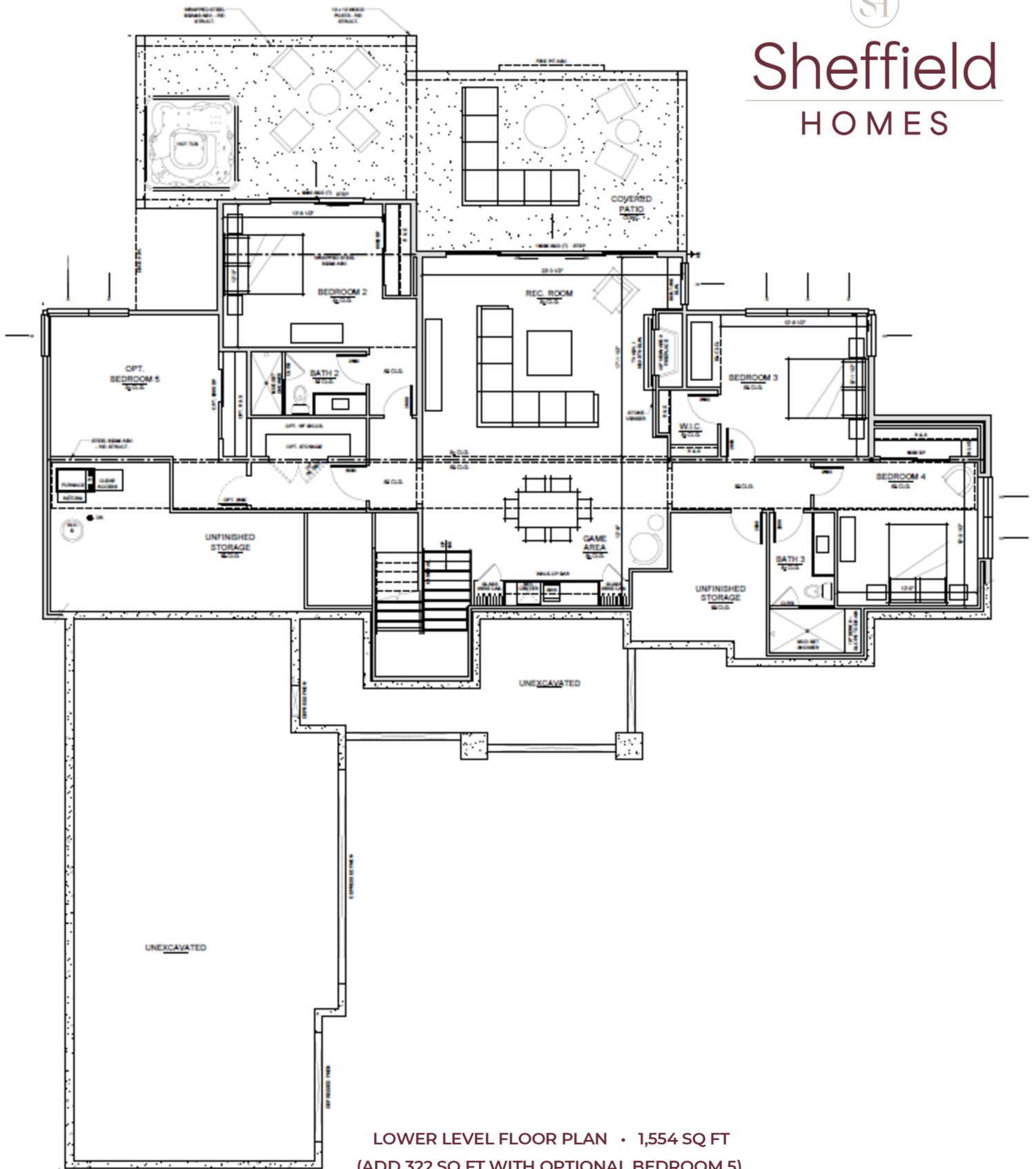


UPPER LEVEL FLOOR PLAN • 2,473 SQ FT





Sheffield HOMES

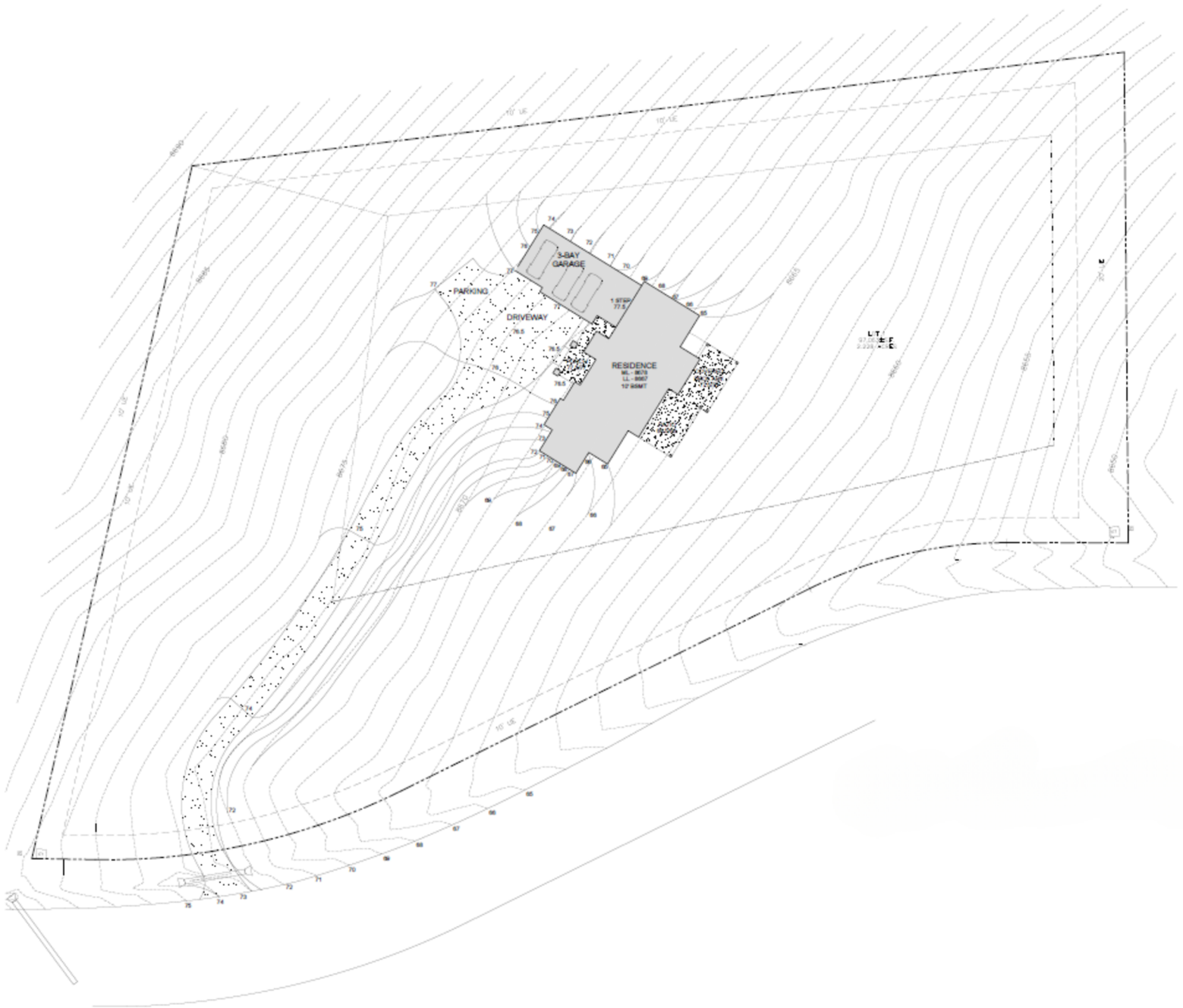


LOWER LEVEL FLOOR PLAN • 1,554 SQ FT
(ADD 322 SQ FT WITH OPTIONAL BEDROOM 5)



Sheffield

HOMES



SITE PLAN





Sheffield HOMES

COLORADO ROOTS | CUSTOMER DRIVEN

For nearly fifty years, Sheffield Homes has been crafting custom homes that reflect the unique needs and lifestyles of our clients. Serving the Denver Metro area and now Grand County, our team of experienced builders and designers work with you every step of the way to ensure that your home is truly a reflection of you. Our commitment to quality, transparency, and customer satisfaction sets us apart.

[Learn More](#)

