







30 Snow Ridge Drive, Tabernash, CO

-  6 bedrooms
-  5 1/2 baths
-  4,415 finished sq.ft.
-  3 car garage - 1,214 sq.ft.
-  Finished basement included

PREMIUM VIEWS  
UNDERSTATED LUXURY



Text or call for more information  
**NICOLE O'NEILL**  
720-734-3905



View of James Peak and ski area from lot



View of Indian Peaks from lot

## 30 Snow Ridge Drive, Tabernash, CO

- Sprawling ranch design with expansive views from every room
- 2021 IECC - building to the EnergyStar 3.2v and Indoor AirPlus criterion
- Oversized living areas on both main and lower levels
- Large deck off of great room with 10' tall sliding glass doors and tongue-and-groove vaulted covering
- Built-in gas firepit on main-level deck, plumbed gas line for grill
- Walk-out basement with spacious lower-level patio offers additional outdoor living area
- Inviting great room features vaulted ceiling with knotty Alder beams, open to expansive views; gas fireplace with floor-to-ceiling stone
- Lavish kitchen appointed with 6-burner range top, 42" refrigerator, large island, and dining area surrounded by 180° views
- Owner's spa provides relaxing retreat with gas fireplace, tongue-and-groove ceiling detail, 5-piece bath, unobstructed views, and shared walk-in closet with laundry access
- Use flex room with attached bath off of kitchen for office, gaming, hobbies, or additional guest space
- Ample storage space for seasonal gear in both garage and mudroom
- Lower-level rec room with fireplace and wet bar
- In-floor radiant heat throughout, including snow-melt at front porch and sidewalk
- Pella windows and doors throughout
- Roofing features both asphalt shingles and standing seam metal



Sheffield  
HOMES

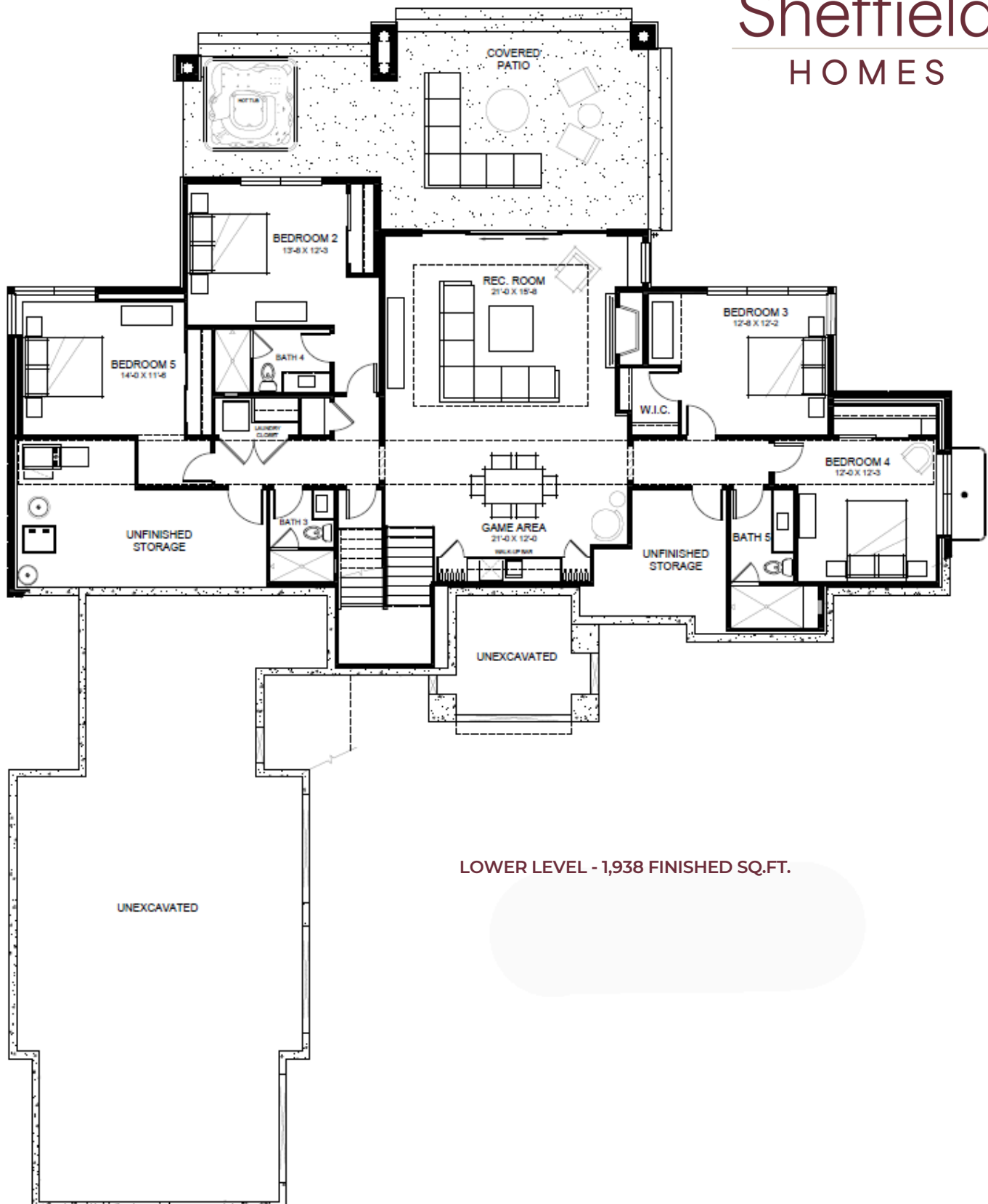
COLORADO ROOTS | CUSTOMER DRIVEN

If mountain living speaks to your soul, here's your opportunity to live surrounded by the unparalleled splendor of Colorado's Rocky Mountains. With unobstructed views of Devil's Thumb in the Indian Peaks Wilderness area and the soaring majesty of James Peak, the 2.3 acre walk-out lot creates an idyllic setting for this beautiful 4,415 sq. ft. home. And better yet? Close proximity to Winter Park ski area (11.3 miles) means you'll never sit in weekend traffic on I-70 again.

**We speak the language of Luxury.**



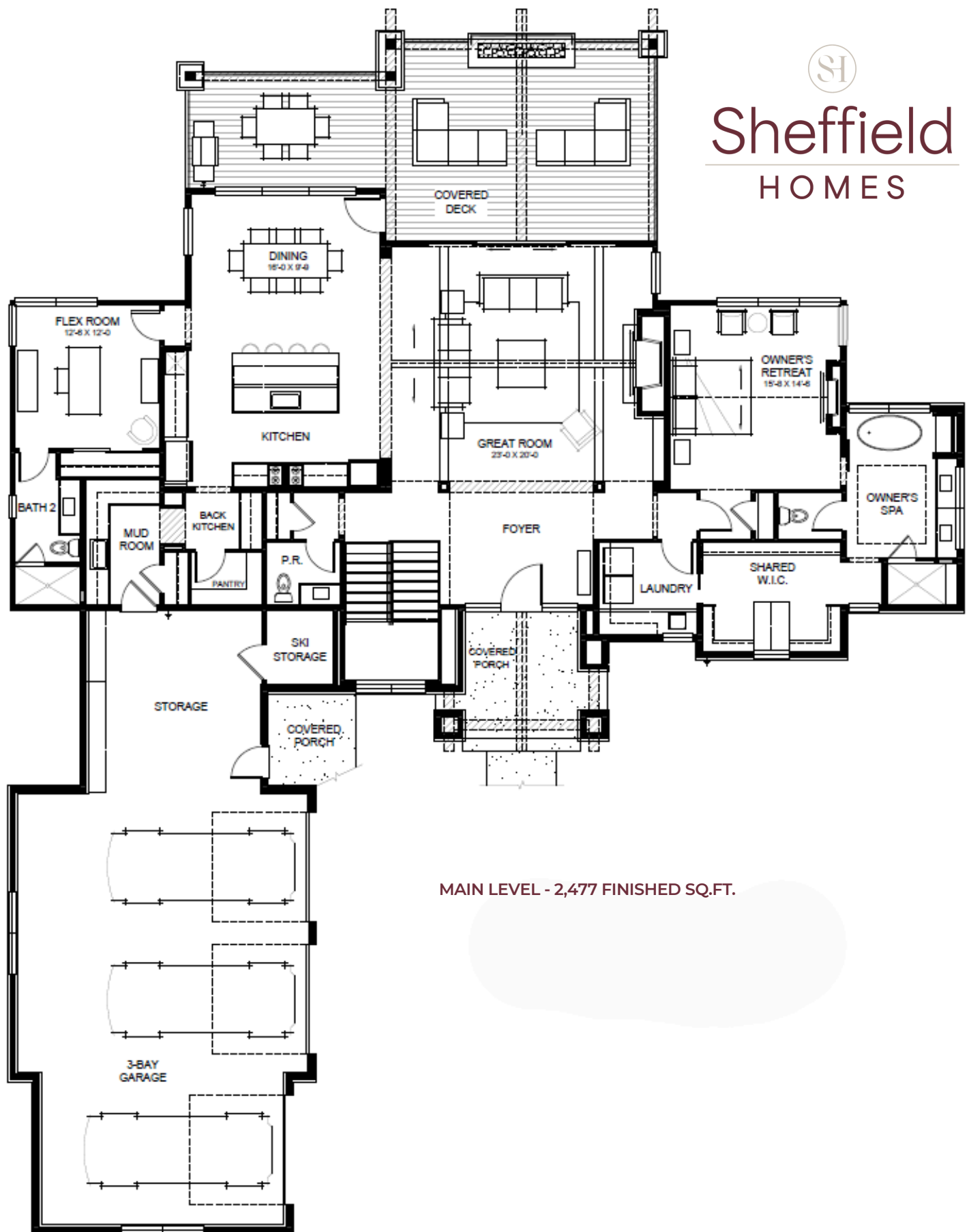
# Sheffield HOMES



LOWER LEVEL - 1,938 FINISHED SQ.FT.



# Sheffield HOMES



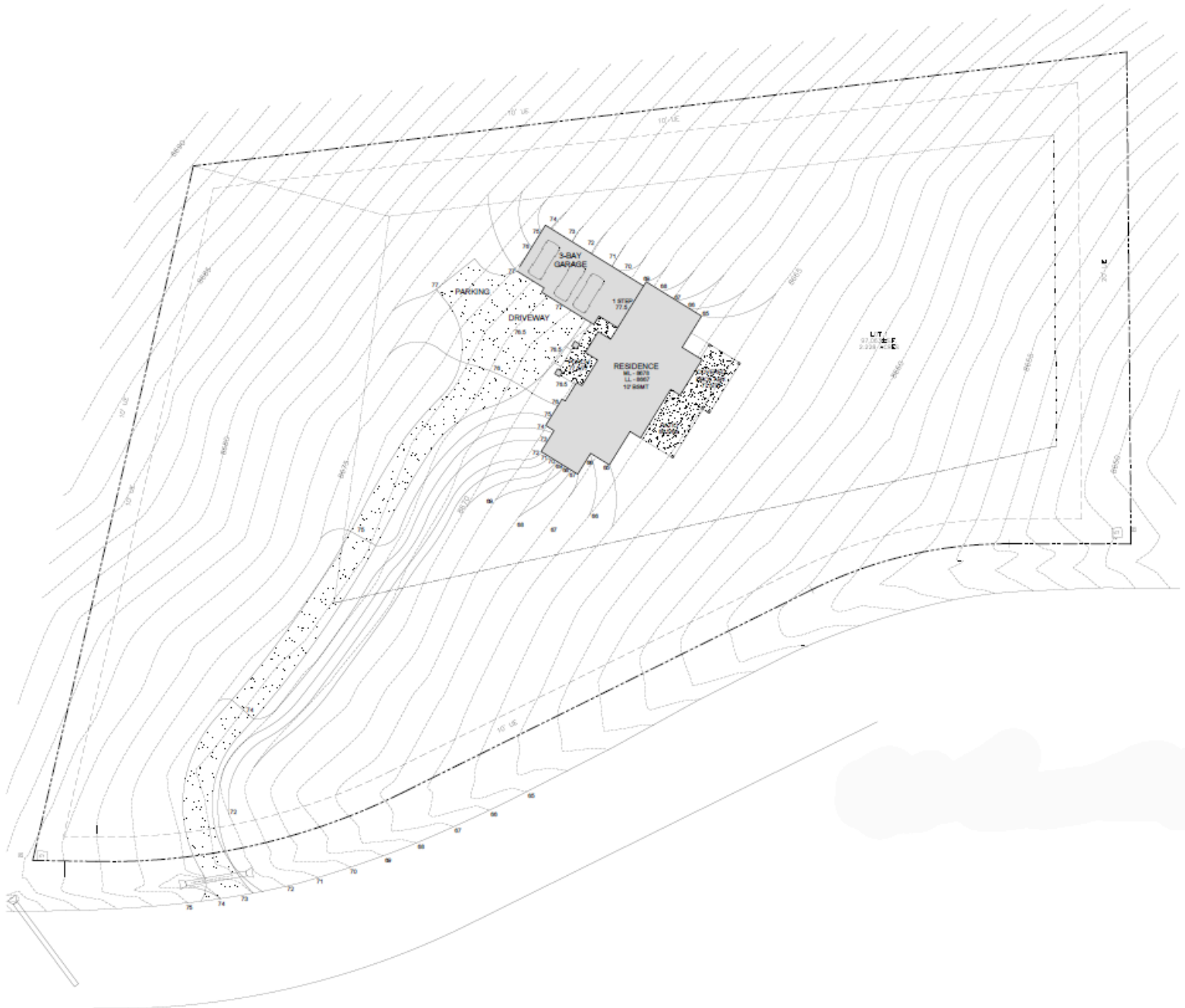
MAIN LEVEL - 2,477 FINISHED SQ.FT.





# Sheffield

## HOMES



**SITE PLAN**





# Sheffield HOMES

COLORADO ROOTS | CUSTOMER DRIVEN

For nearly fifty years, Sheffield Homes has been crafting custom homes that reflect the unique needs and lifestyles of our clients. Serving the Denver Metro area and now Grand County, our team of experienced builders and designers work with you every step of the way to ensure that your home is truly a reflection of you. Our commitment to quality, transparency, and customer satisfaction sets us apart.

[Learn More](#)

