



# Sheffield

## HOMES



945 St. Andrews Lane, Louisville, CO



5 bedrooms, plus loft



5 baths



4,022 sf finished living space



3 car garage



Basement finish included

Base Price - \$1.825 million

INTENTIONAL DESIGN  
FLUID LIVING SPACES



Text or call for more information

**NICOLE O'NEILL**

720-734-3905





## 945 St. Andrews Lane, Louisville, CO

- 2-story open concept design
- High-end finishes throughout
- Spacious owner's entry offers convenient storage with double closet, and bench with built-in cubbies
- Welcoming entry foyer offers unbroken sight line to great room windows
- Classic turned staircase features large landing and open handrail
- 60" Gas fireplace with raised hearth and stone veneer in great room adds style and ambiance
- Luxuriant kitchen appointed with top-of-the-line appliances and large island includes back kitchen area adjacent to walk-in pantry
- Large 212 sq ft covered patio off of dining area extends living area outdoors
- Full bath on main level situated with convenient access to flex room/optional 5th bedroom
- Palatial 2nd-story primary suite with generous spa-like bath with private deck and access to laundry
- Large windows bathe spacious upper loft in light
- Bedrooms 2 and 3 each have dedicated bathrooms
- Bedroom 4 | bath 5 in finished basement, with rec room and game area
- Build with EnergyStar 3.2, DOE Zerh, and Net Zero rated specifications for top efficiency
- Sheffield pays 2.8% buyer agent fee on base price of home



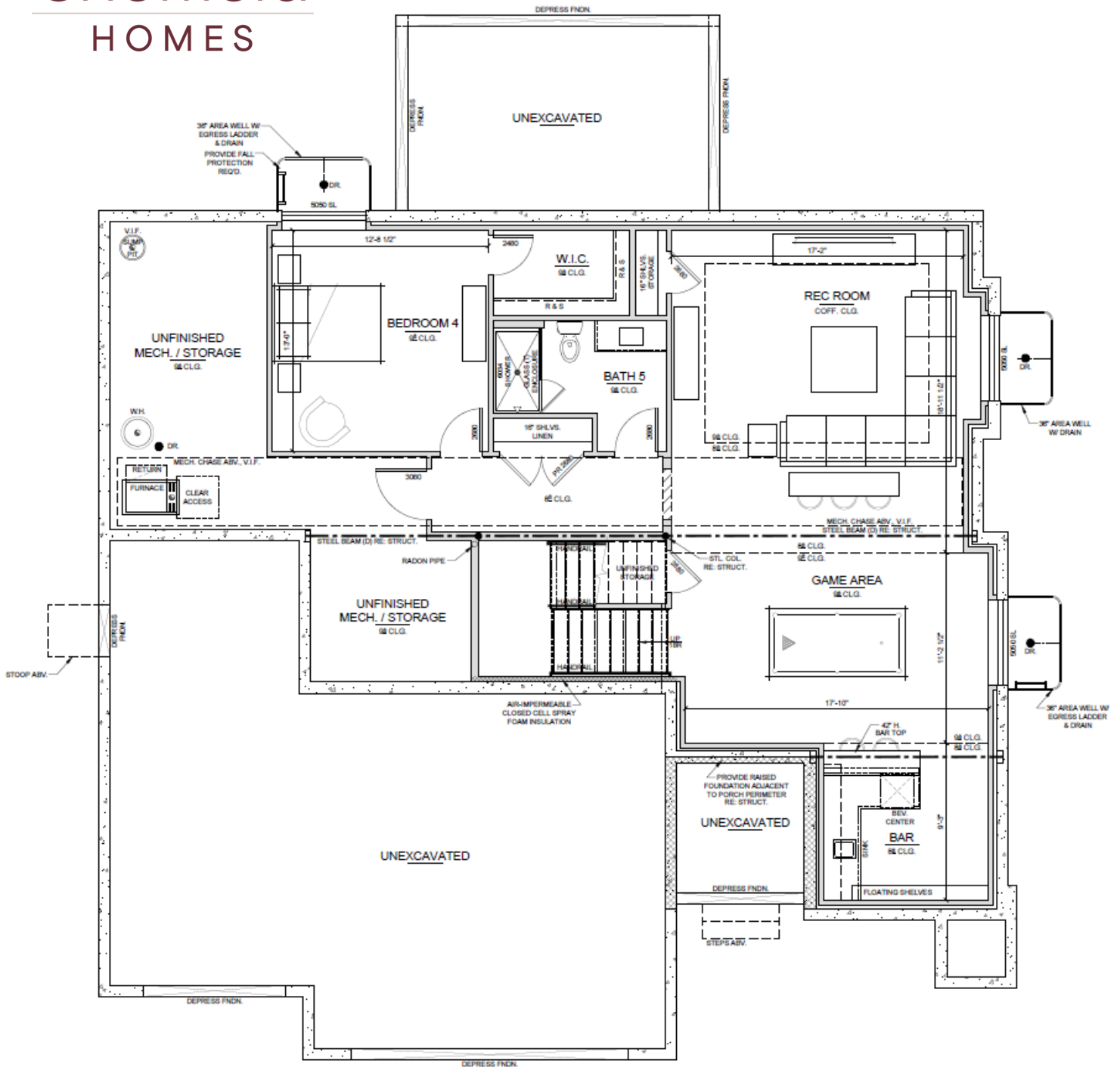
# Sheffield HOMES

COLORADO ROOTS | CUSTOMER DRIVEN

For nearly fifty years, Sheffield Homes has been crafting custom homes that reflect the unique needs and lifestyles of our clients. Serving the Denver Metro and surrounding areas, our team of experienced builders and designers work with you every step of the way to ensure that your home is truly a reflection of you. Our commitment to quality, transparency, and customer satisfaction is what sets us apart.

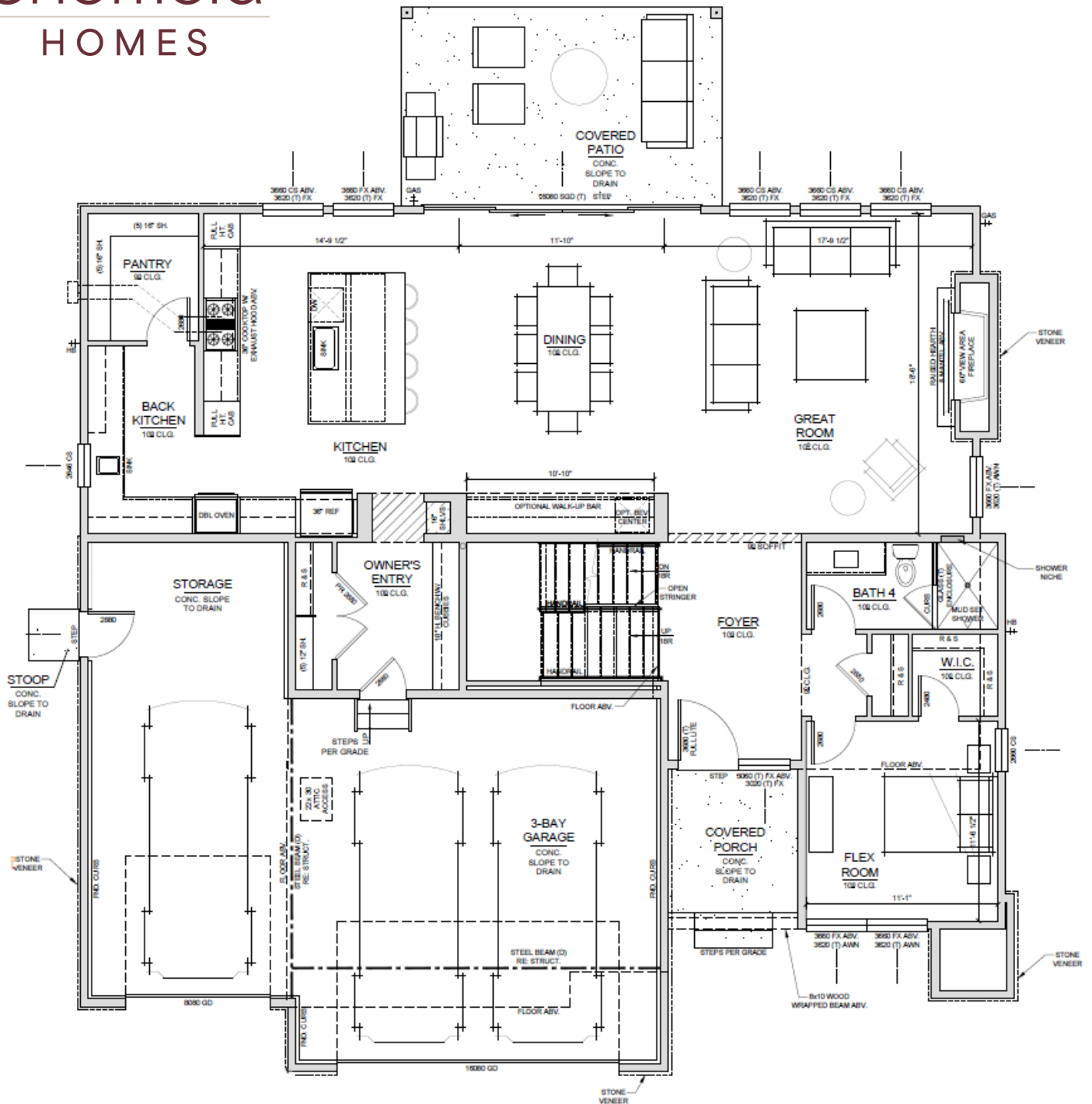
**We Speak the Language of Luxury**





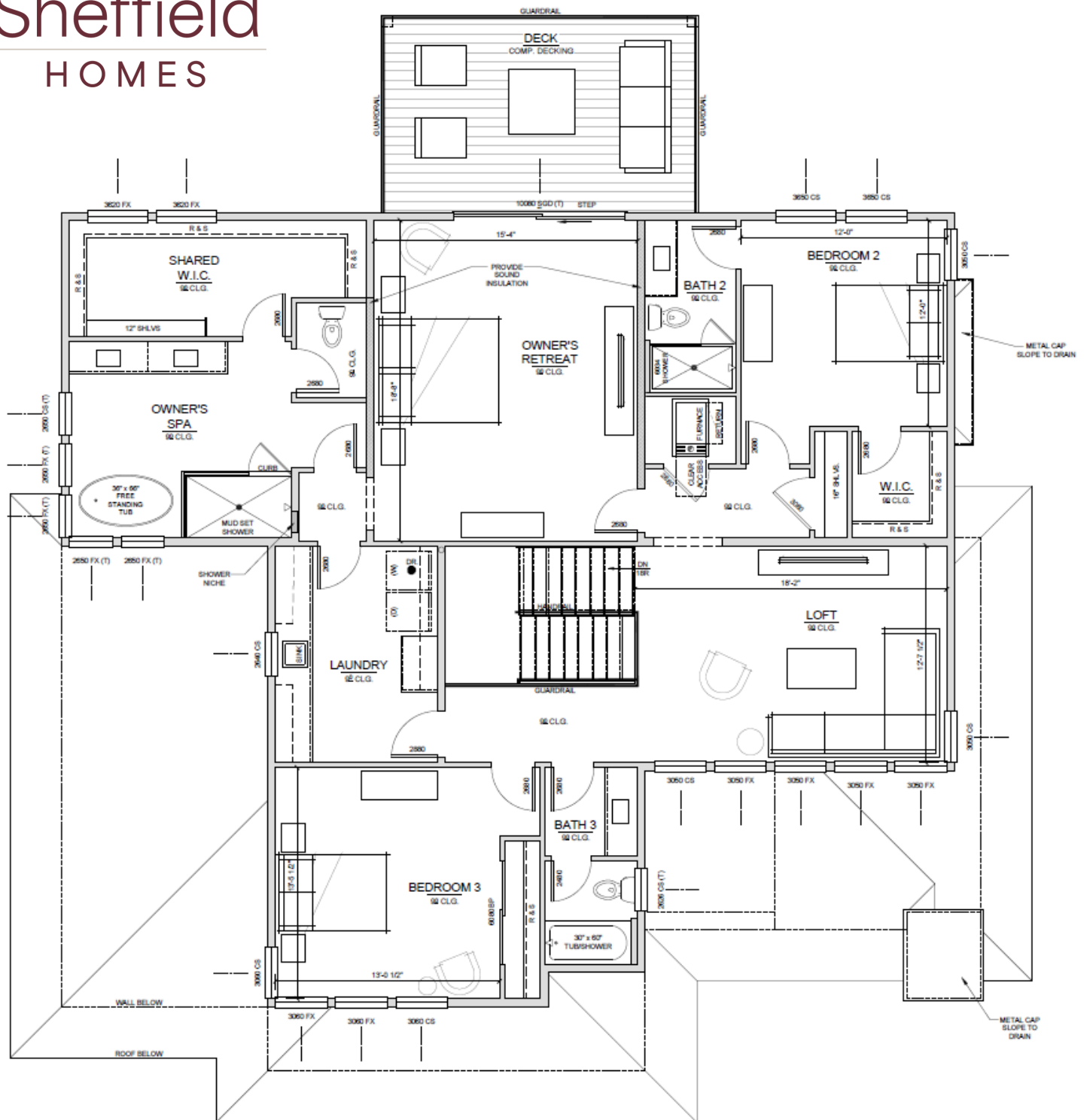
945 St. Andrews Lane, Louisville, CO  
 LOWER LEVEL FLOOR PLAN • 1,076 SQ FT

SI  
Sheffield  
HOMES



945 St. Andrews Lane, Louisville, CO  
MAIN LEVEL FLOOR PLAN • 1,586 SQ FT

SI  
Sheffield  
HOMES



945 St. Andrews Lane, Louisville, CO  
UPPER LEVEL FLOOR PLAN • 1,804 SQ FT