

*Perfection at its Peak*

# LUXURY DESIGN SUSTAINABLE LIFESTYLE

Sheffield's newest modern design features  
4 bedrooms, loft, 4 baths, and 2,895 sq. ft.  
Add 954 sq. ft. with optional basement finish.



1002 Turnberry Circle, Louisville



**Sheffield  
Homes**

Colorado Roots, Customer Driven.

Nicole O'Neill  
Sheffield Homes  
720-830-2495 (cell)  
303-420-0056 (office)

WWW.SHEFFIELDHOMES.COM

Starting at \$1.59 million

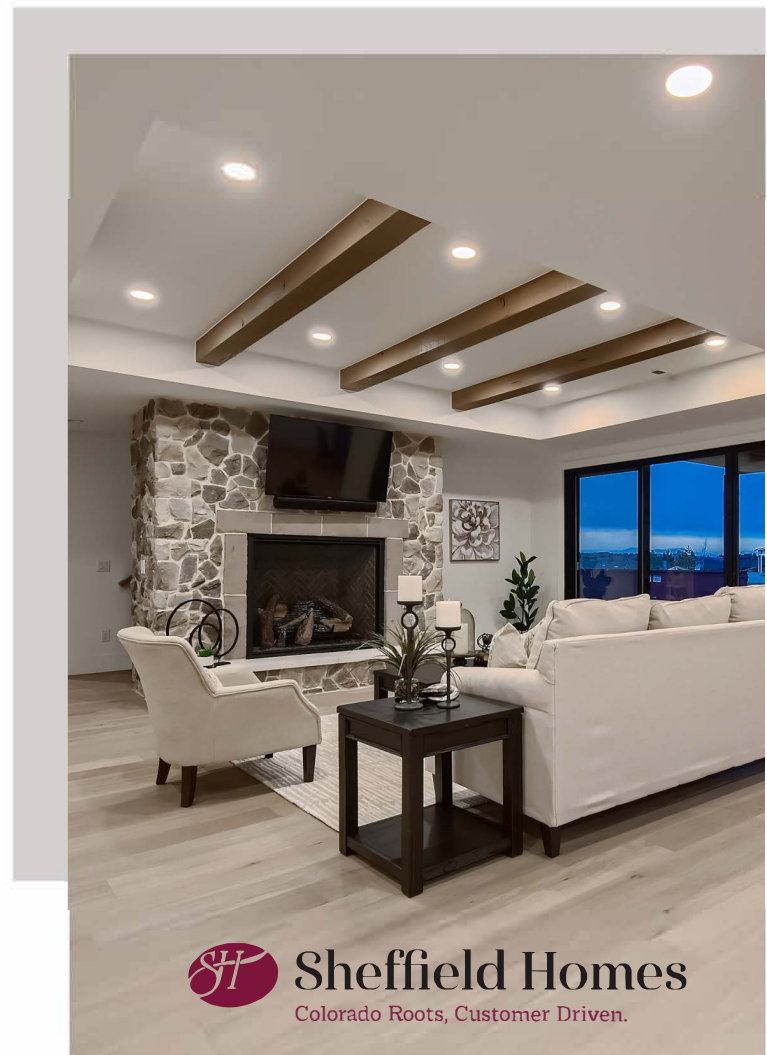
# Lived-in Luxury

- Large great room with wall of windows, two of which open to extended outdoor living space
- 2 fireplaces - one in great room and one at covered patio / outdoor living area
- Spacious owner's entry offers convenience with double closet, bench with cubbies, and direct access to back kitchen / butler's pantry
- Gracious entry off of large covered porch gives unbroken sight line to great room windows
- Classic turned staircase features large landing and open handrail on both sides
- Lavish kitchen appointed with top-of-the-line appliances, large island, and dining area surrounded by windows
- Full bath on main level situated with convenient access to 4th bedroom
- Palatial 2nd-story primary suite tucked privately on the opposite side from bedrooms 2, 3, and laundry
- Spacious secondary bedrooms, each with dedicated bathroom
- Loft area may be converted to optional 5th bedroom
- Optional basement finish adds 954 sq. ft. of living space with rec room, game area, wet bar, bedroom, and full bath
- Build with EnergyStar 3.2 and NetZero rated specifications for top efficiency
- Sheffield pays 2.8% buyer agent fee on base price of home

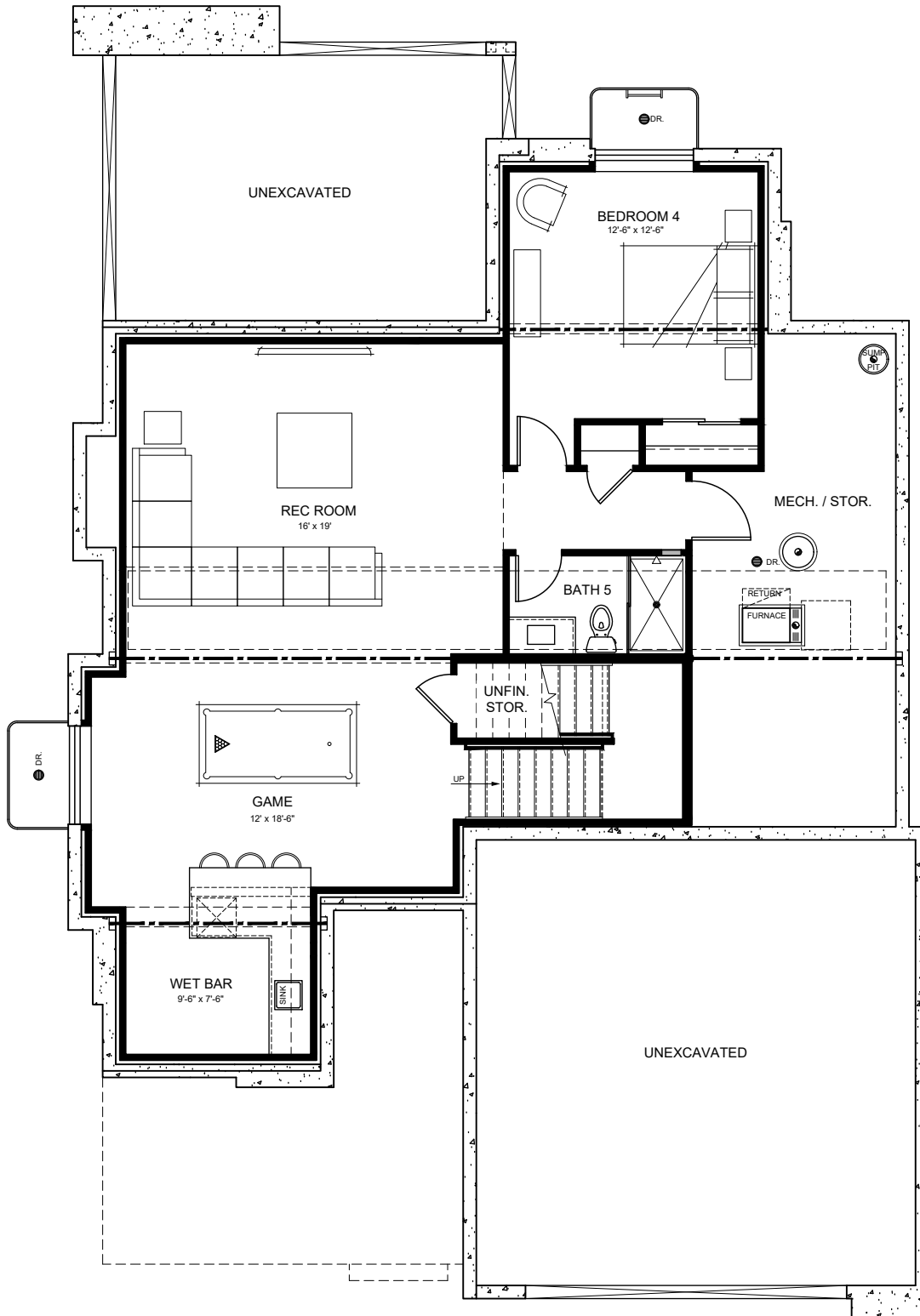
MORE INFO



Livable Luxury



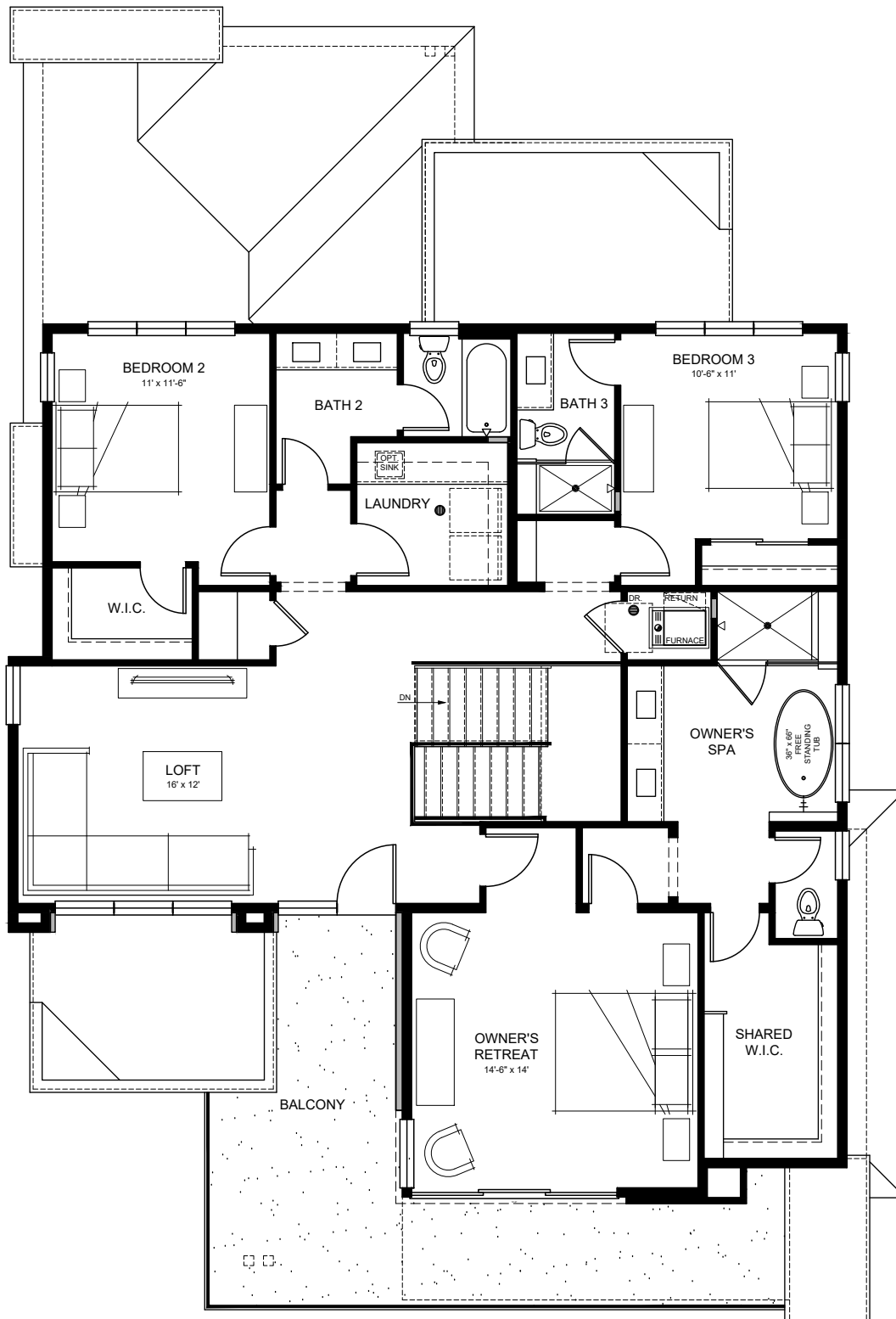
 **Sheffield Homes**  
Colorado Roots, Customer Driven.



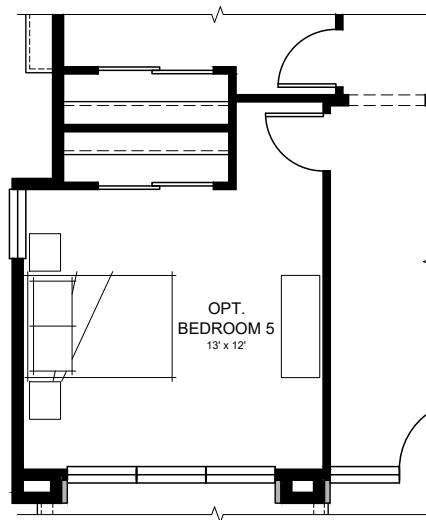
**LOWER LEVEL FLOOR PLAN**  
(optional) 954 sqft



**MAIN LEVEL FLOOR PLAN**  
1,408 sqft



UPPER LEVEL FLOOR PLAN  
1,487 sqft



OPT. BEDROOM 5