

Summit of Style

LUXURY DESIGN INTENTIONAL LIVING

Sheffield's mountain modern design features
5 bedrooms, loft, 5 baths, and 4,023 sq. ft.
Includes 997 sq. ft. finished walk-out basement



Exterior elevation may vary slightly

1302 Eldorado Drive, Superior



Sheffield
HOMES

COLORADO ROOTS | CUSTOMER DRIVEN

Nicole O'Neill
text or call:
720.830.2495



Let's Connect!

Starting at \$1.89 million

Contemporary Luxe

- 2-story open concept design
- High-end finishes throughout
- Spacious owner's entry offers convenience with double closet, and direct access to back kitchen and oversized walk-in pantry
- Gracious entry off of large covered porch gives unbroken sight line to great room windows
- Classic turned staircase features large landing and open handrail on both sides
- Gas fireplace in great room adds style and ambiance
- Lavish kitchen appointed with top-of-the-line appliances, large island, and dining area surrounded by windows
- Full bath on main level situated with convenient access to 4th bedroom
- Palatial 2nd-story primary suite with generous spa-like bath and private access to deck
- Spacious secondary bedrooms, each with dedicated bathroom
- Large loft area for second living area, play room, office, or teen hang-out
- Walk-out basement finish (included) adds 997 sq. ft. of living space with rec room, game area, wet bar, bedroom, and full bath
- Build with EnergyStar 3.2 rated specifications for top efficiency
- Sheffield pays 2.8% buyer agent fee on base price of home

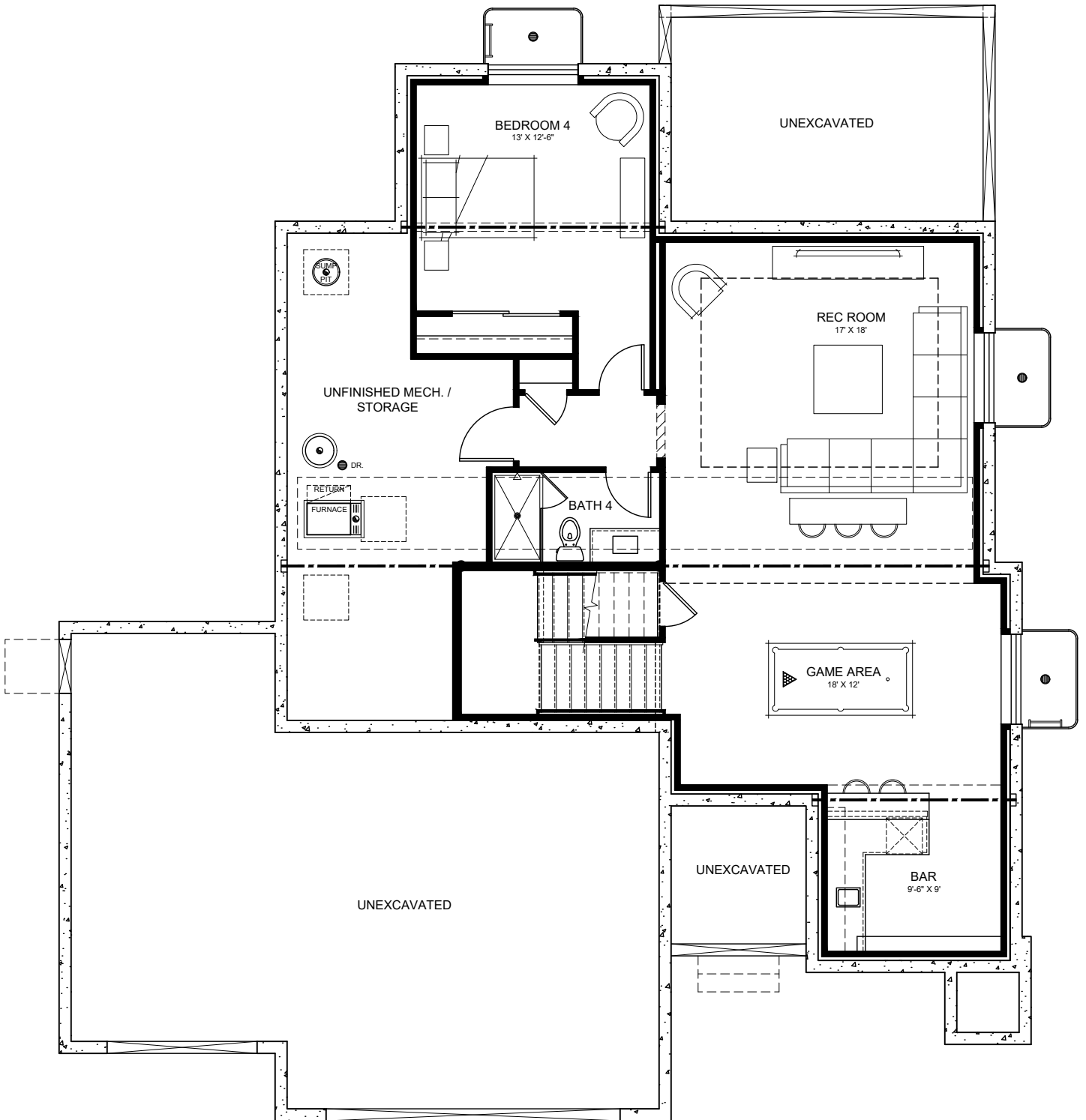
MORE INFO

www.sheffieldhomes.com



Sheffield
HOMES



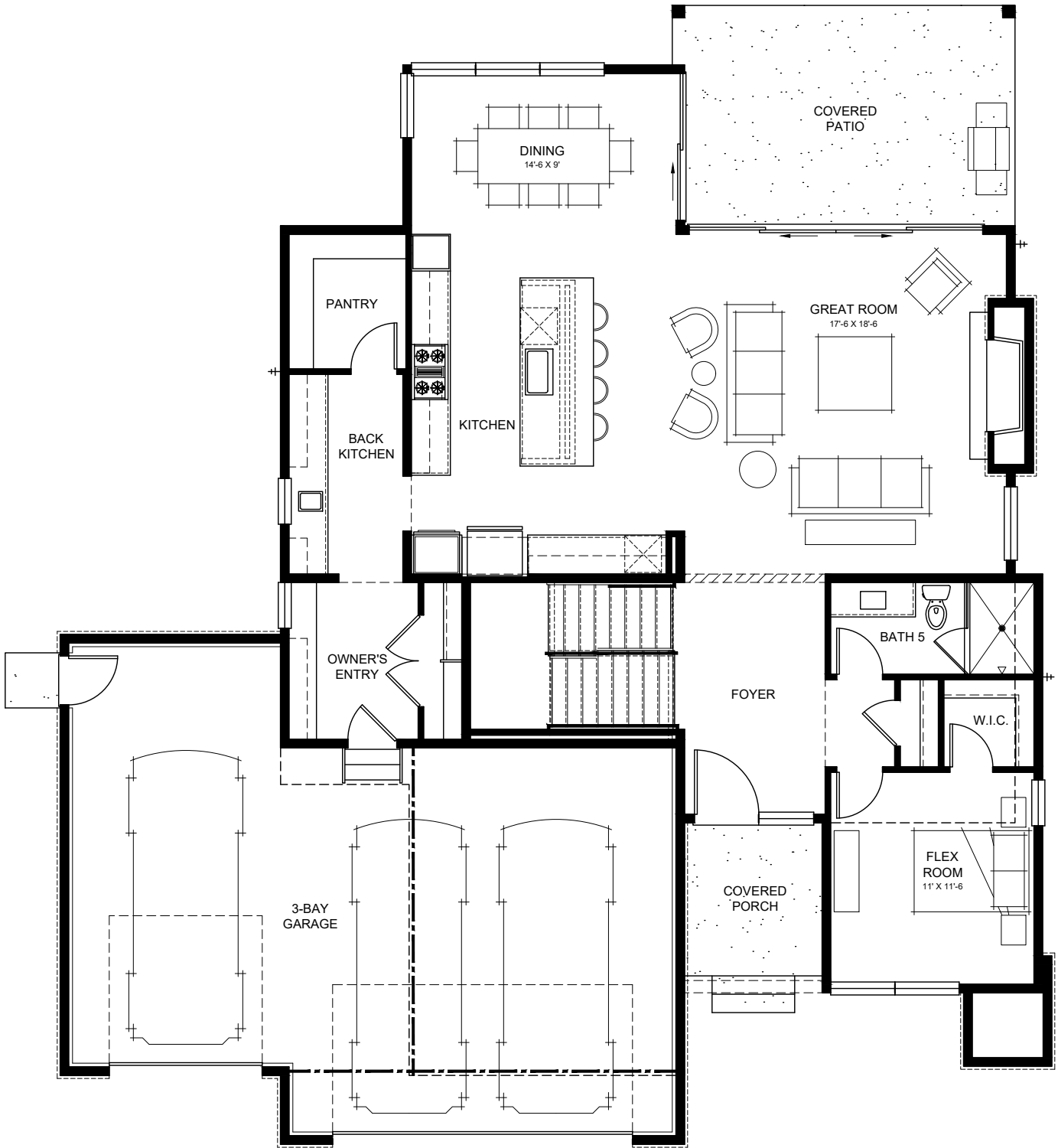


LOWER LEVEL FLOOR PLAN

Finished 997 sqft
 Unfinished 360 sqft



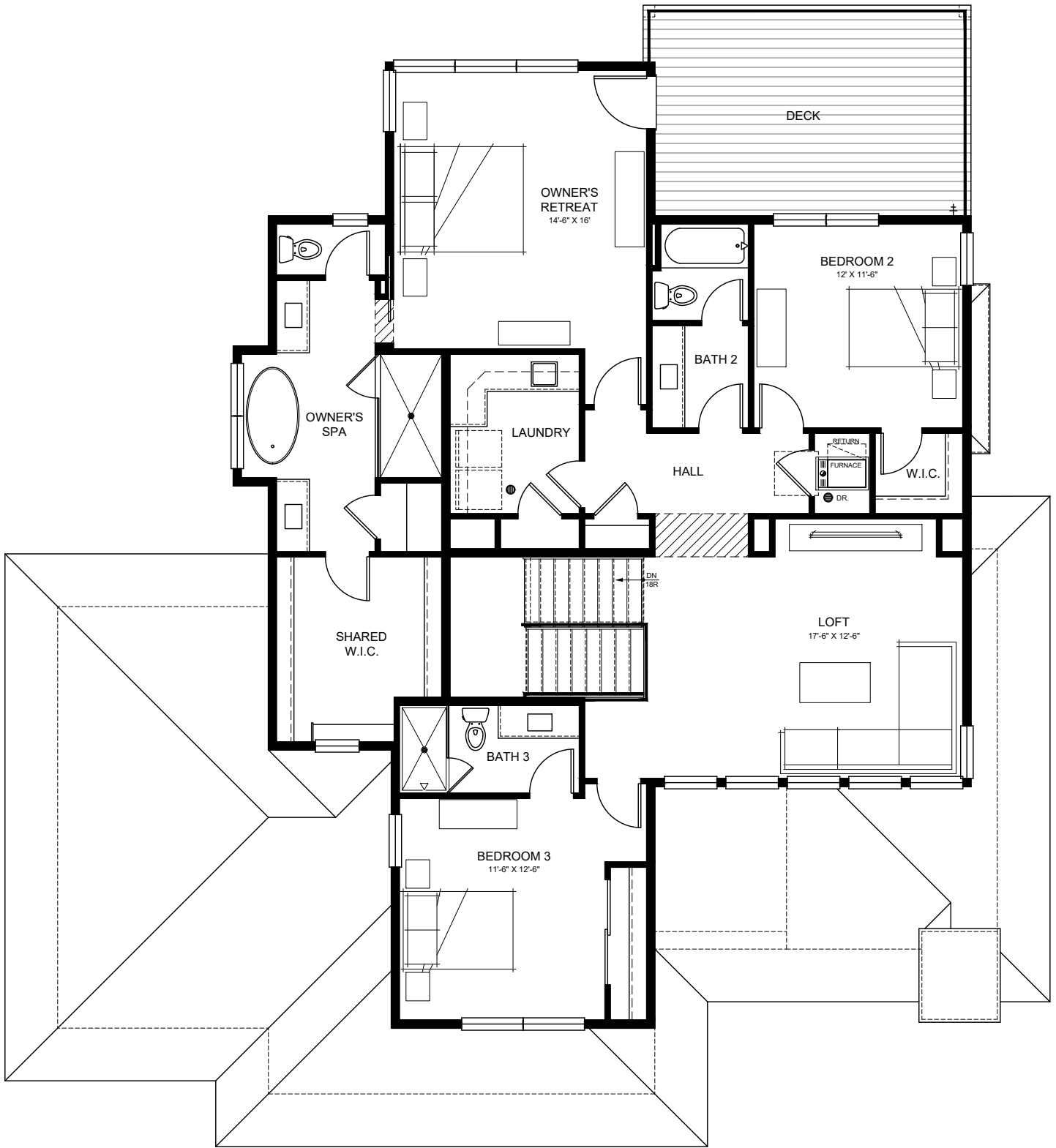
COLORADO ROOTS | CUSTOMER DRIVEN



MAIN LEVEL FLOOR PLAN

1,478 sqft





UPPER LEVEL FLOOR PLAN

1,539 sqft