



945 St. Andrews Lane, Louisville

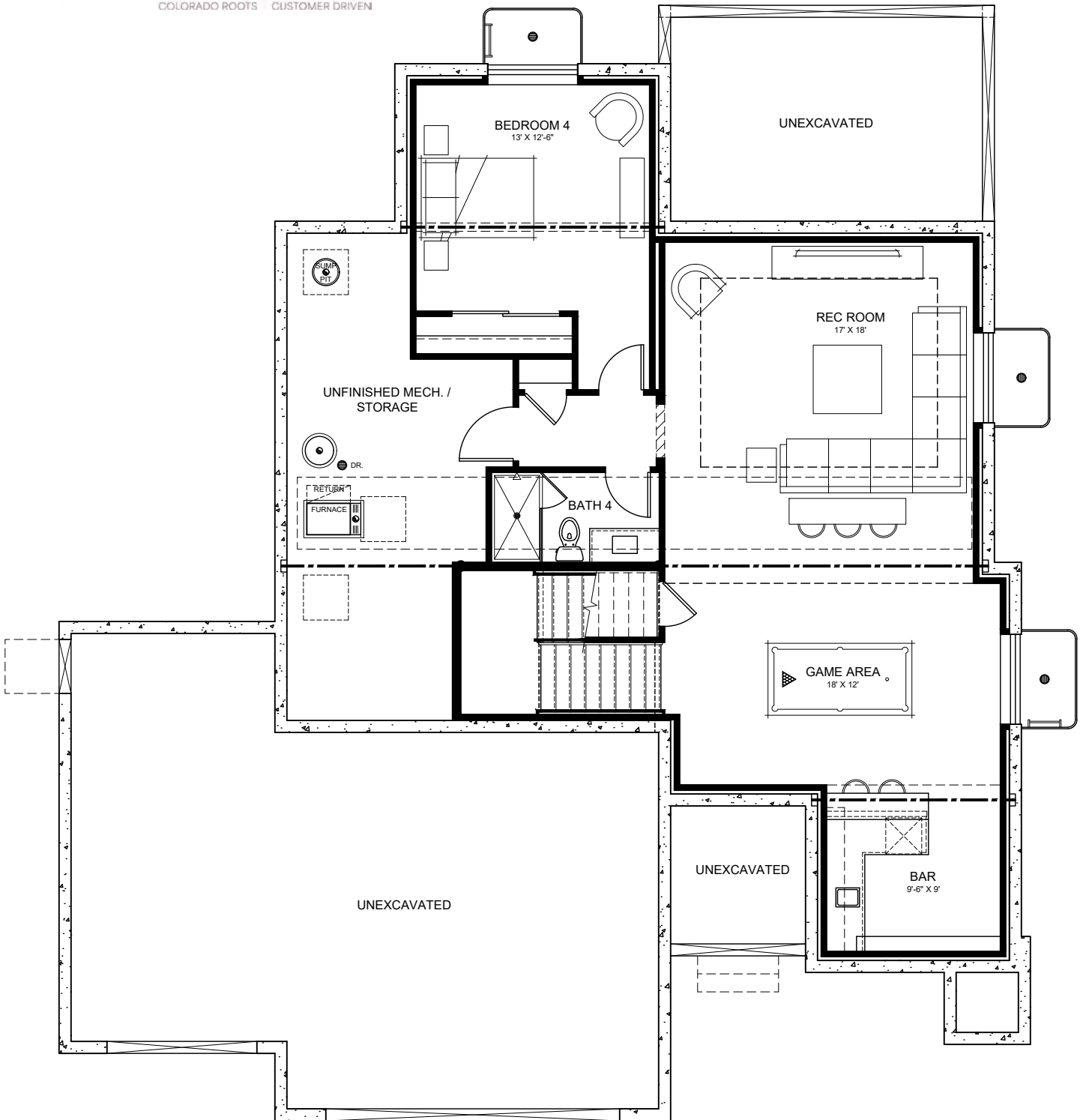
5 Bedroom / 5 Bath, plus Loft
2-story open concept design

Mountain Modern – high-end finishes
Godden|Sudik Architects

Energy Star 3.2, DOE Zerh, Net Zero

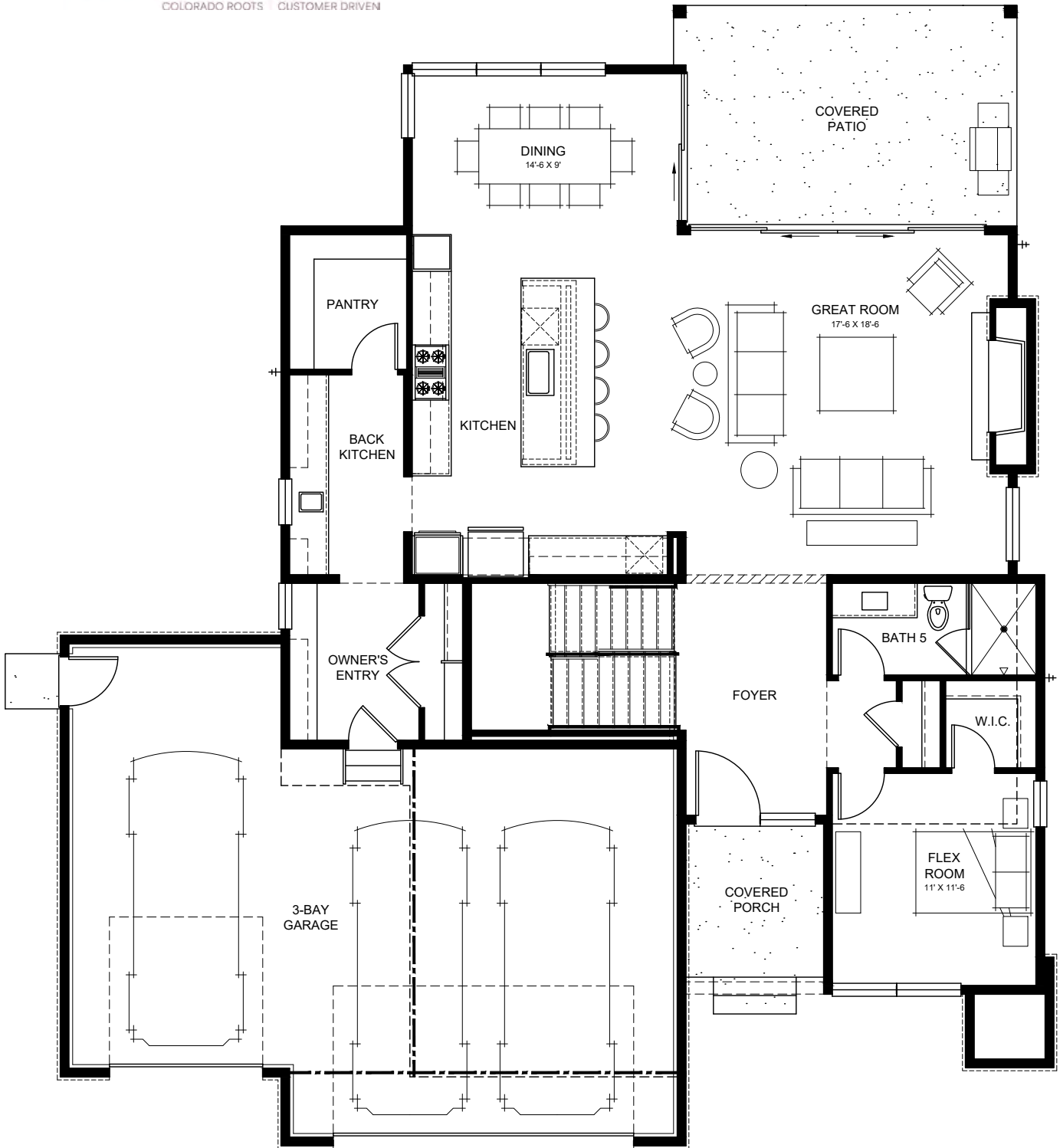
3,026 sq ft plus 997 basement finish
Price: Starting at \$1,799,000 Completion: 4th quarter 2025





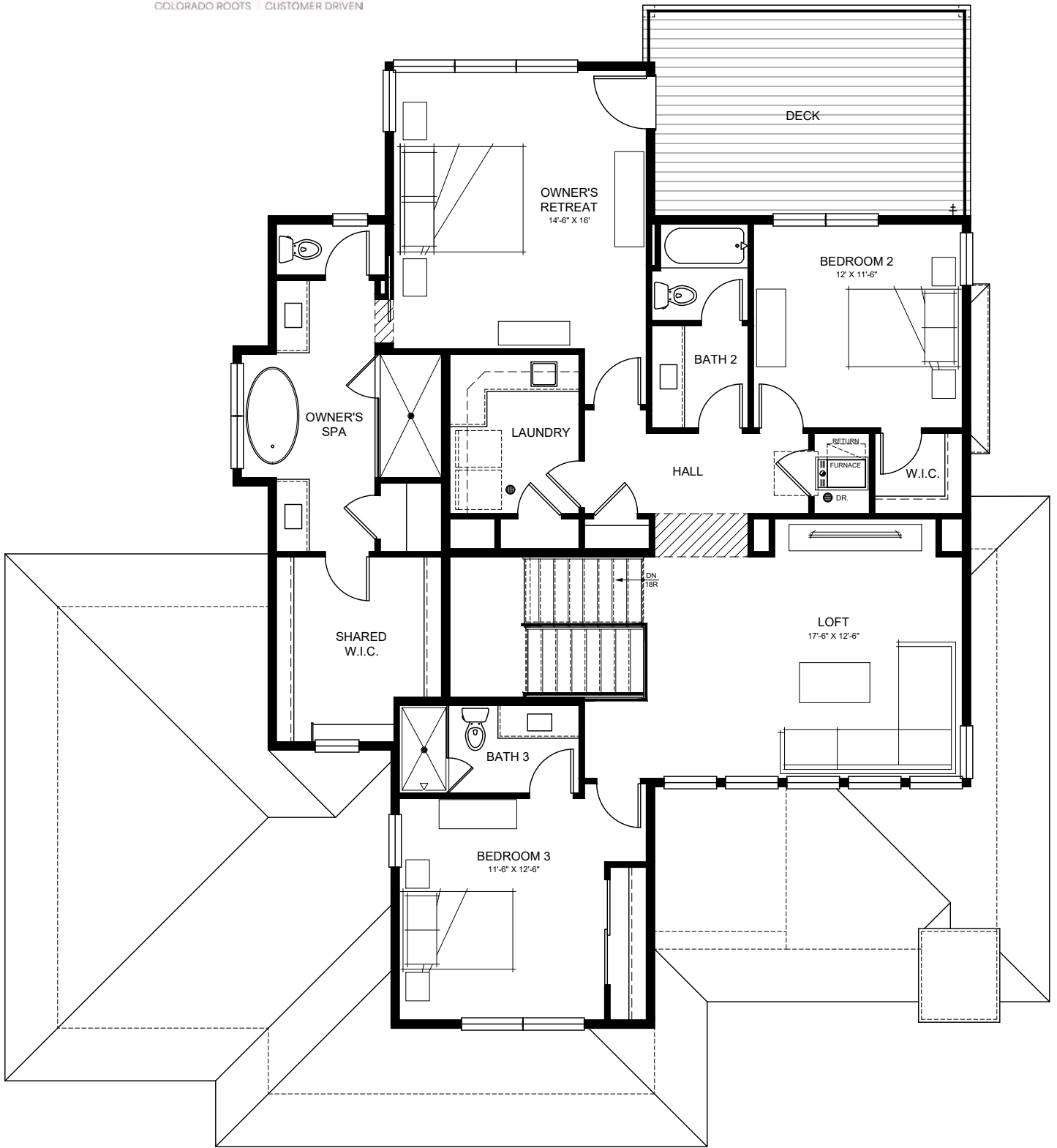
LOWER LEVEL FLOOR PLAN

Finished 997 sq ft
Unfinished 360 sq ft



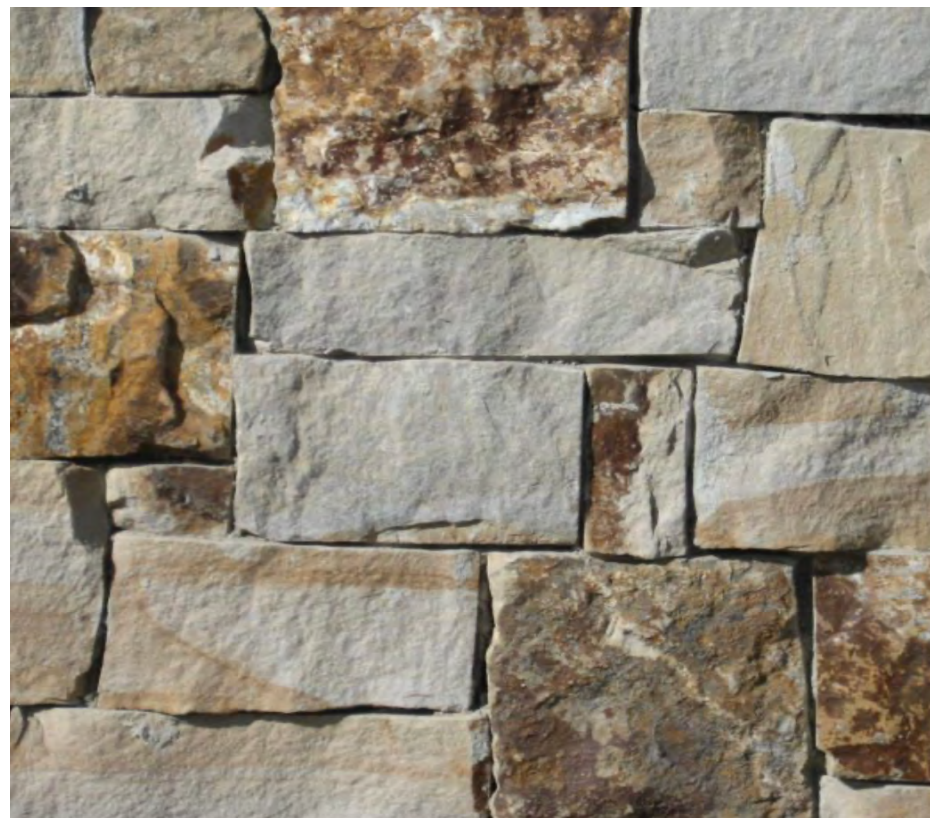
MAIN LEVEL FLOOR PLAN

1,478 sq ft



UPPER LEVEL FLOOR PLAN

1,539 sq ft



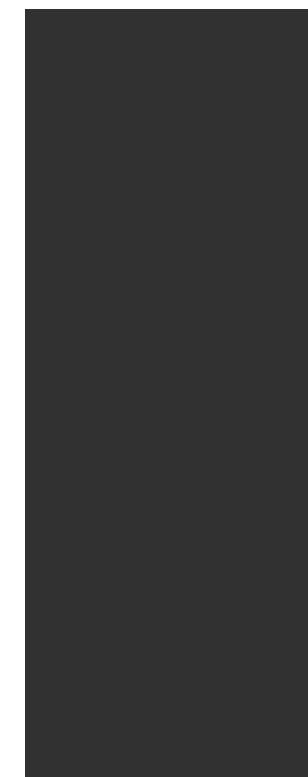
EXTERIOR STONE



EXTERIOR WALL LIGHTING



STAINED SIDING FINISH



PAINTED DETAILS



ENTRY DOOR STYLE



FIREPLACE & STAIRCASE LANDING ACCENT STONE



STAIRCASE CHANDELIER



CEILING FAN



QUARTZ COUNTERTOPS



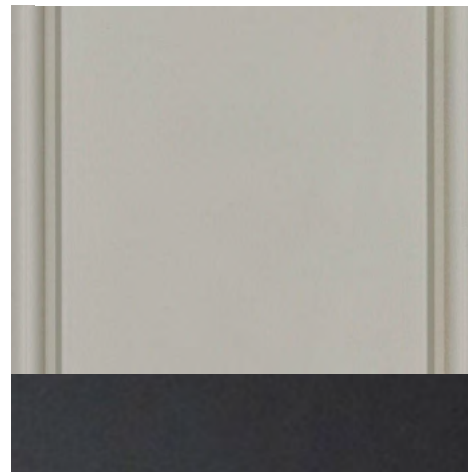
BATHROOM TILE FINISHES



WOOD FLOORING FINISH



KITCHEN FAUCET STYLE



CABINET FINISHES



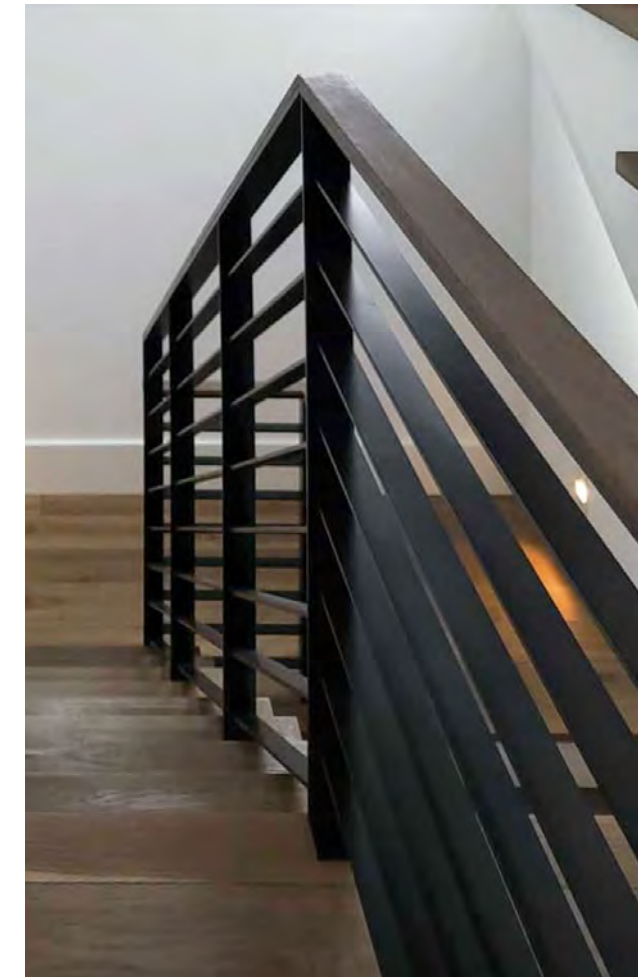
KITCHEN HOOD STYLE & CABINET FINISH



BATHROOM FAUCET STYLE



CARPET STYLE & COLOR



STAIR RAILING DETAIL