



THE HAWTHORN BY SHEFFIELD HOMES

4 BED, 5 BATH // 4,583 FINISHED SQFT

A sophisticated modern farmhouse design is built by Sheffield Homes that is outfitted on 1.93 acres and designed by Godden Sudik Architects, is positioned to back to dedicated open space which showcases the beautiful Rocky Mountain views via the covered deck and patio. The expansive 4 car garage is separated by a workshop space that could also be used as storage.

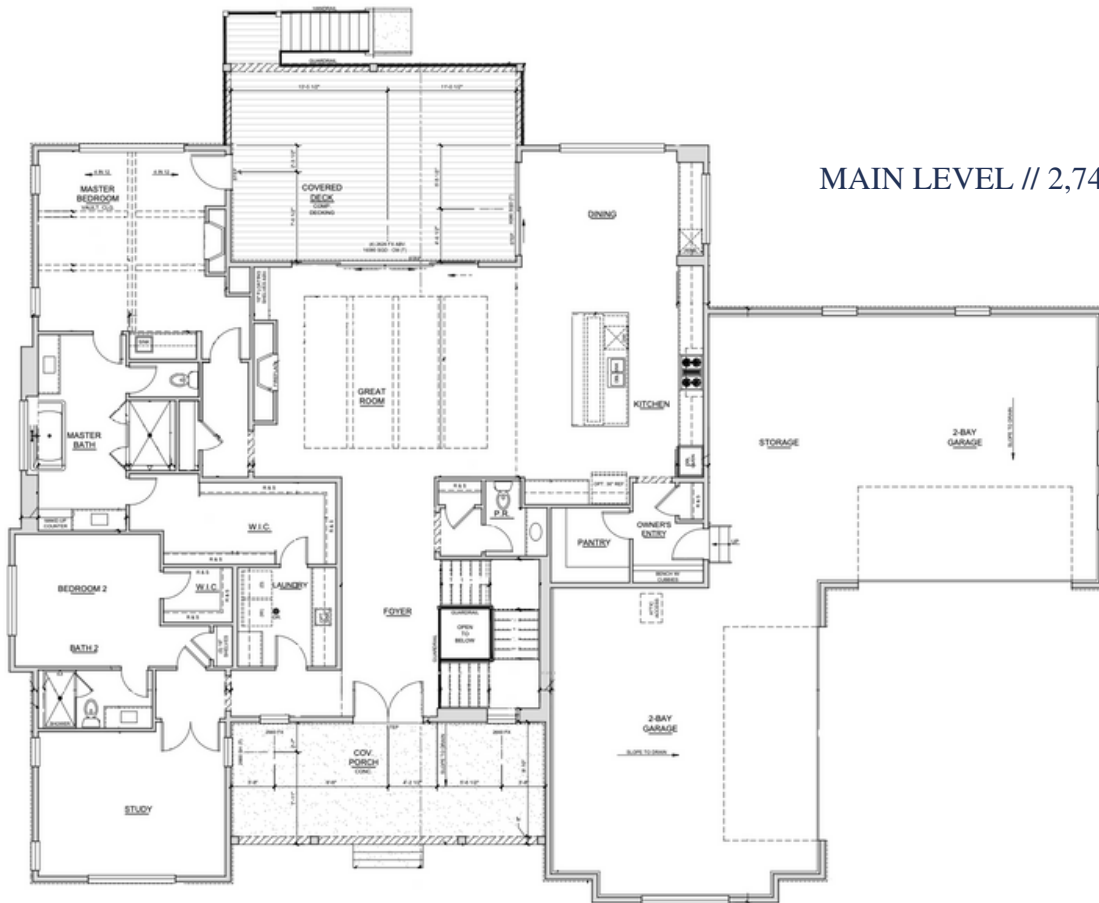
The Hawthorn, a 4 bed / 5 bath custom home, has an entry that centers you in the home with a designated study and a guest suite off of the entry. The great room, which is greeted by a expansive foyer, has a spacious open kitchen concept with a large kitchen island, perfect for entertaining, a double oven, and an attached formal dining room with a built-in hutch bar. Concluding the main floor is a generous owner's suite designed with an expansive walk-in closet and gorgeous views of the Rocky Mountains that is complete with an attached laundry room and stunning 5-piece bathroom.

With 1,839 finished sq ft on the lower level, the living space of this sophisticated modern farmhouse is completed. Entering into the lower level, there is an expansive recreation room, spacious wet bar, game room and powder bathroom. With the 3rd and 4th bedrooms located on the lower level, both are completed with a walk in closet. If you're next home is going to host a lot of get togethers, this home has what you need and will check all of your boxes for acreage living in the Fox Hill community!

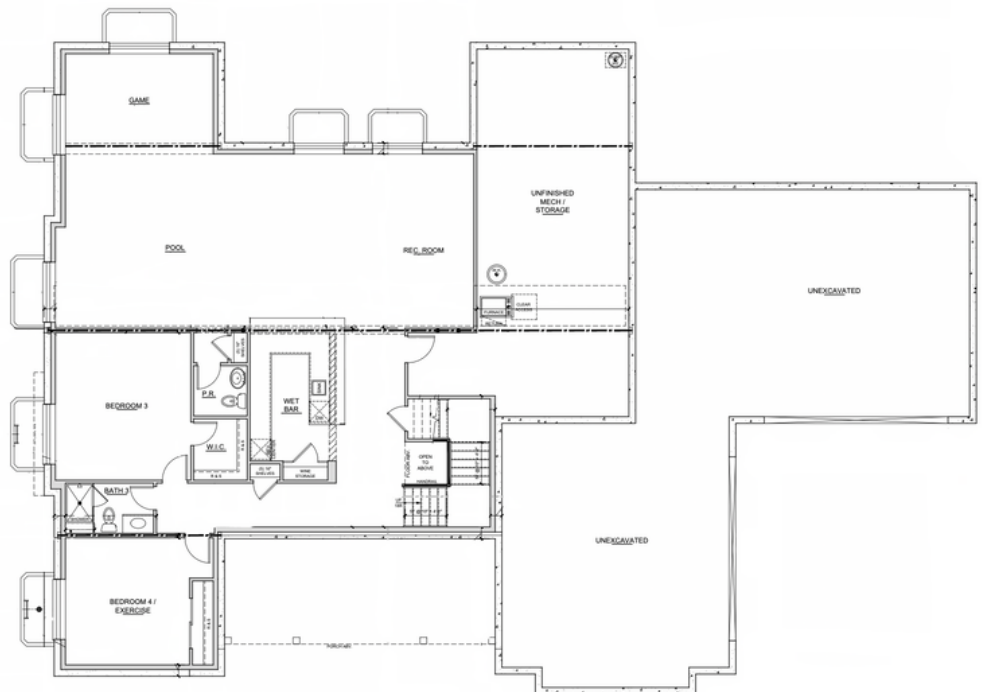


5/2/2023

SHEFFIELD HOMES AT FOX HILL



MAIN LEVEL // 2,744 SQFT FINISHED



LOWER LEVEL // 1,839 SQFT FINISHED