



Sheffield  
HOMES

COLORADO ROOTS | CUSTOMER DRIVEN

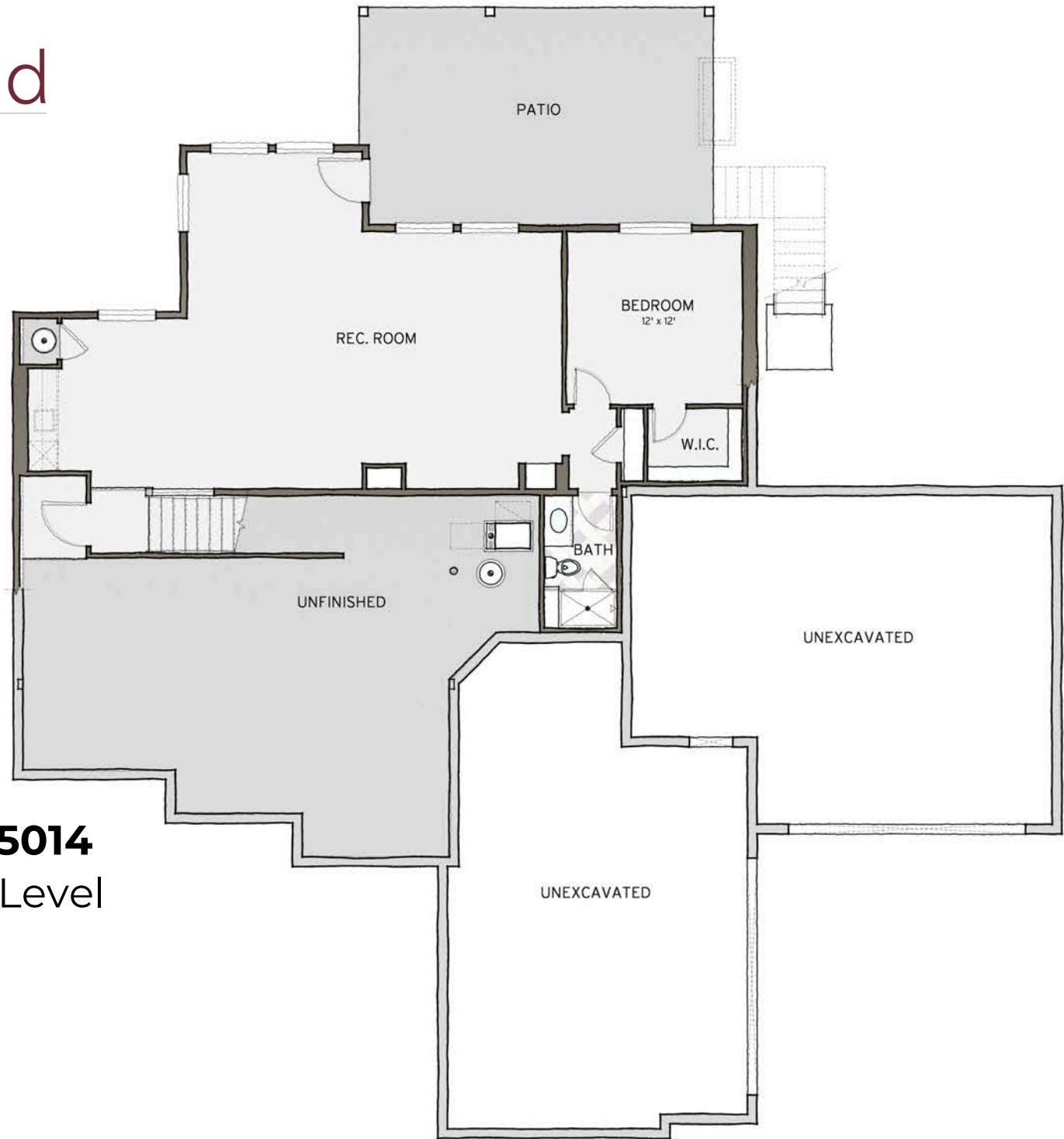
### SQUARE FOOTAGE

MAIN LEVEL	1,779 SQ. FT.
UPPER LEVEL	1,897 SQ. FT.
<b>TOTAL</b>	<b>3,676 SQ. FT.</b>
FINISHED LOWER LEVEL	1,046 SQ. FT.
UNFINISHED LOWER LEVEL	648 SQ. FT.
GARAGE	1,312 SQ. FT.
FRONT PORCH	176 SQ. FT.
DECK	283 SQ. FT.
LOWER LEVEL PATIO	283 SQ. FT.

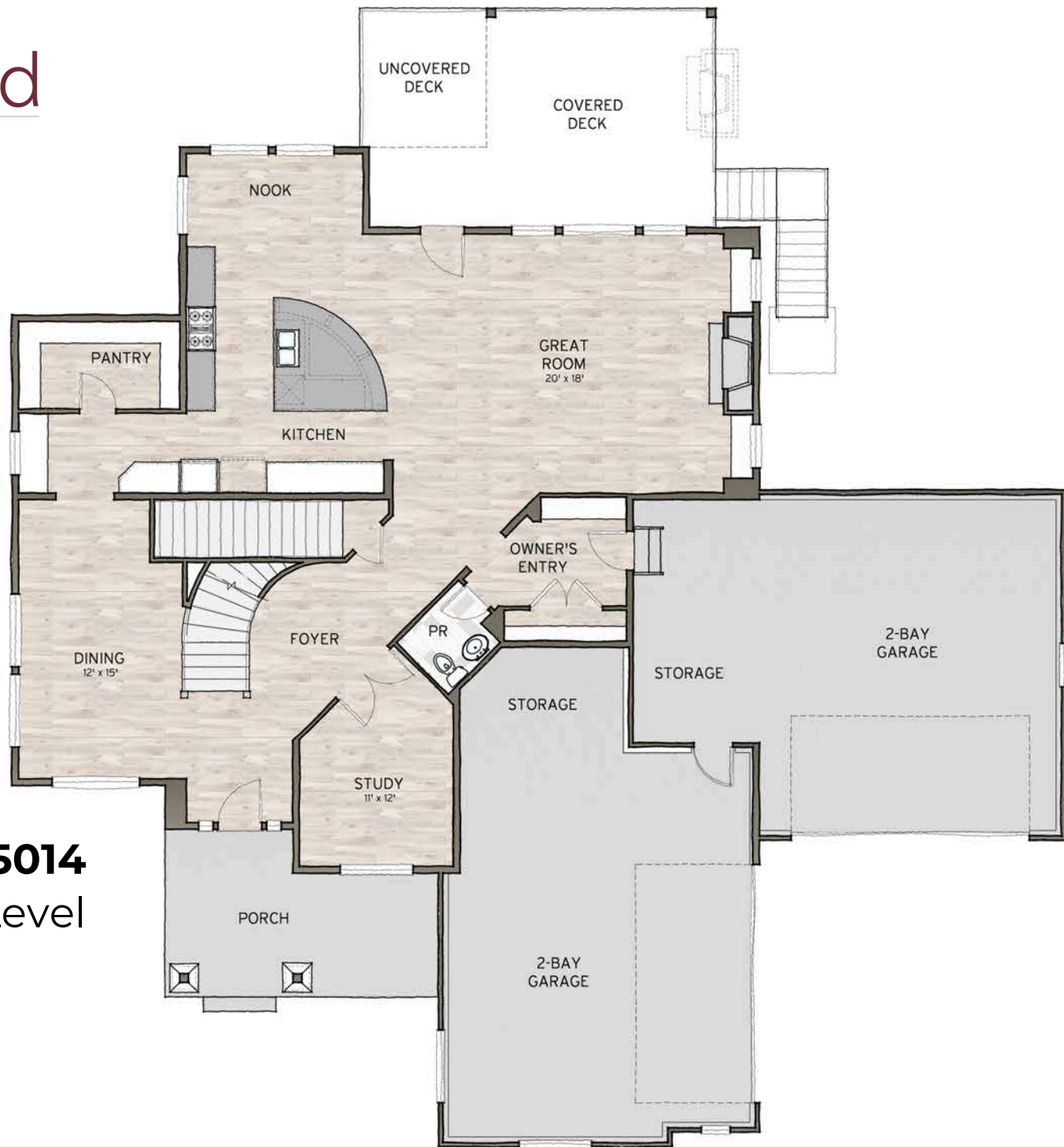
Plan 15014



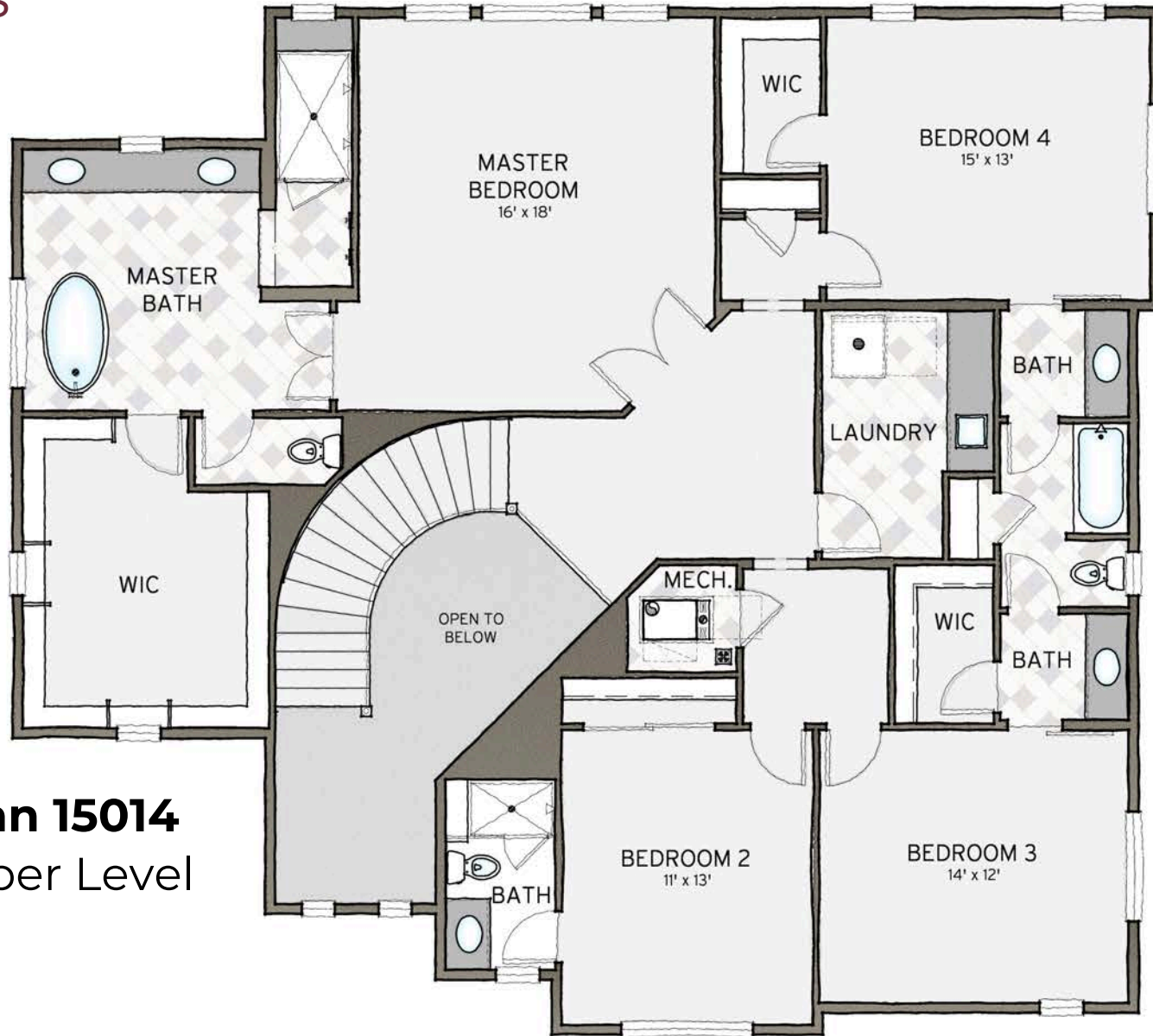
Sheffield  
HOMES



**Plan 15014**  
Lower Level



**Plan 15014**  
Main Level



**Plan 15014**  
Upper Level