



## Plan #947

5 Bdrm | 5 Bath | Loft  
2-story open concept design

Mountain Modern – high-end finishes  
Godden | Sudik Architects

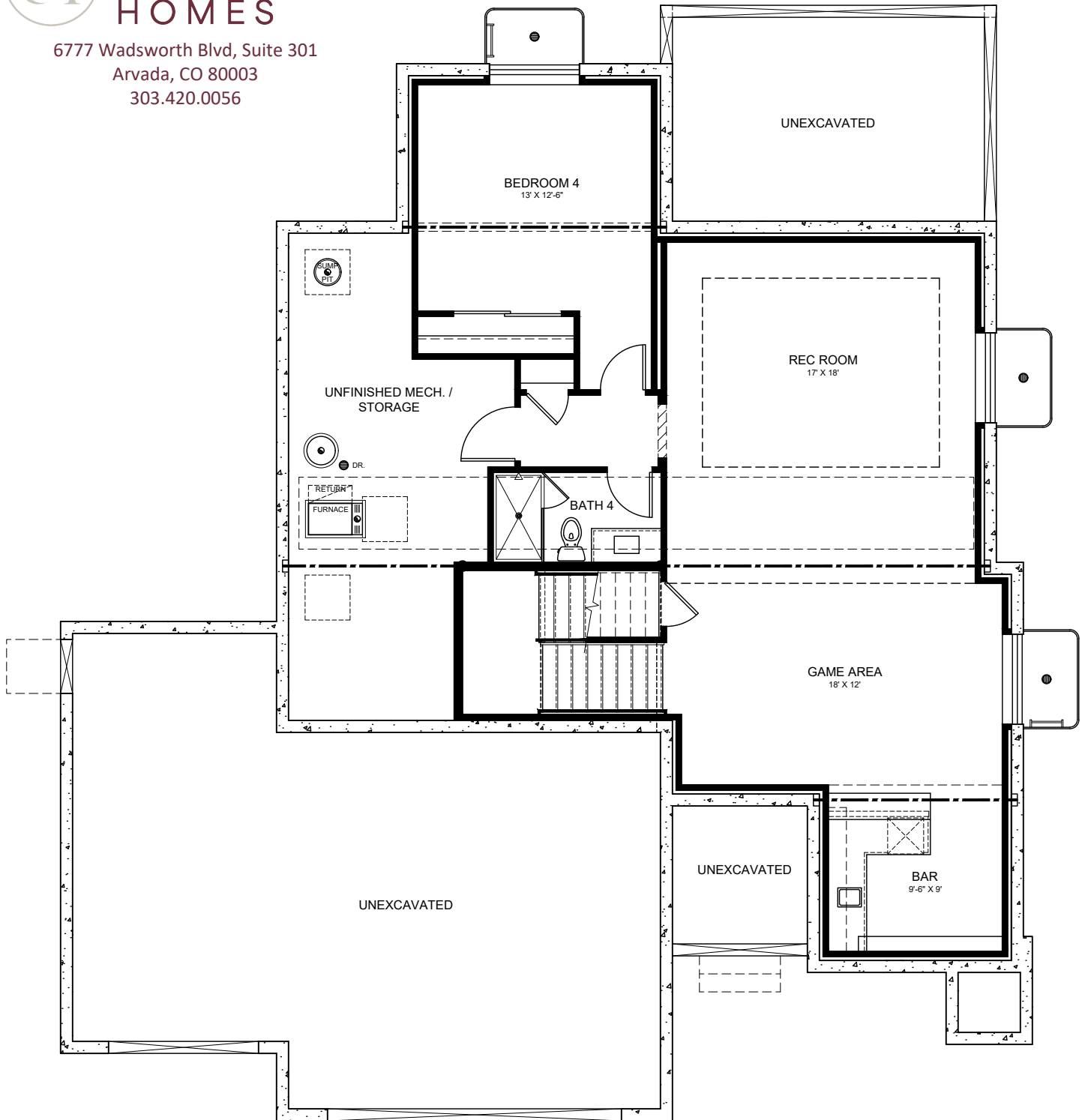
Energy Star 3.2, DOE Zerh, Net Zero

3,026 sq ft plus 997 sq ft basement finish





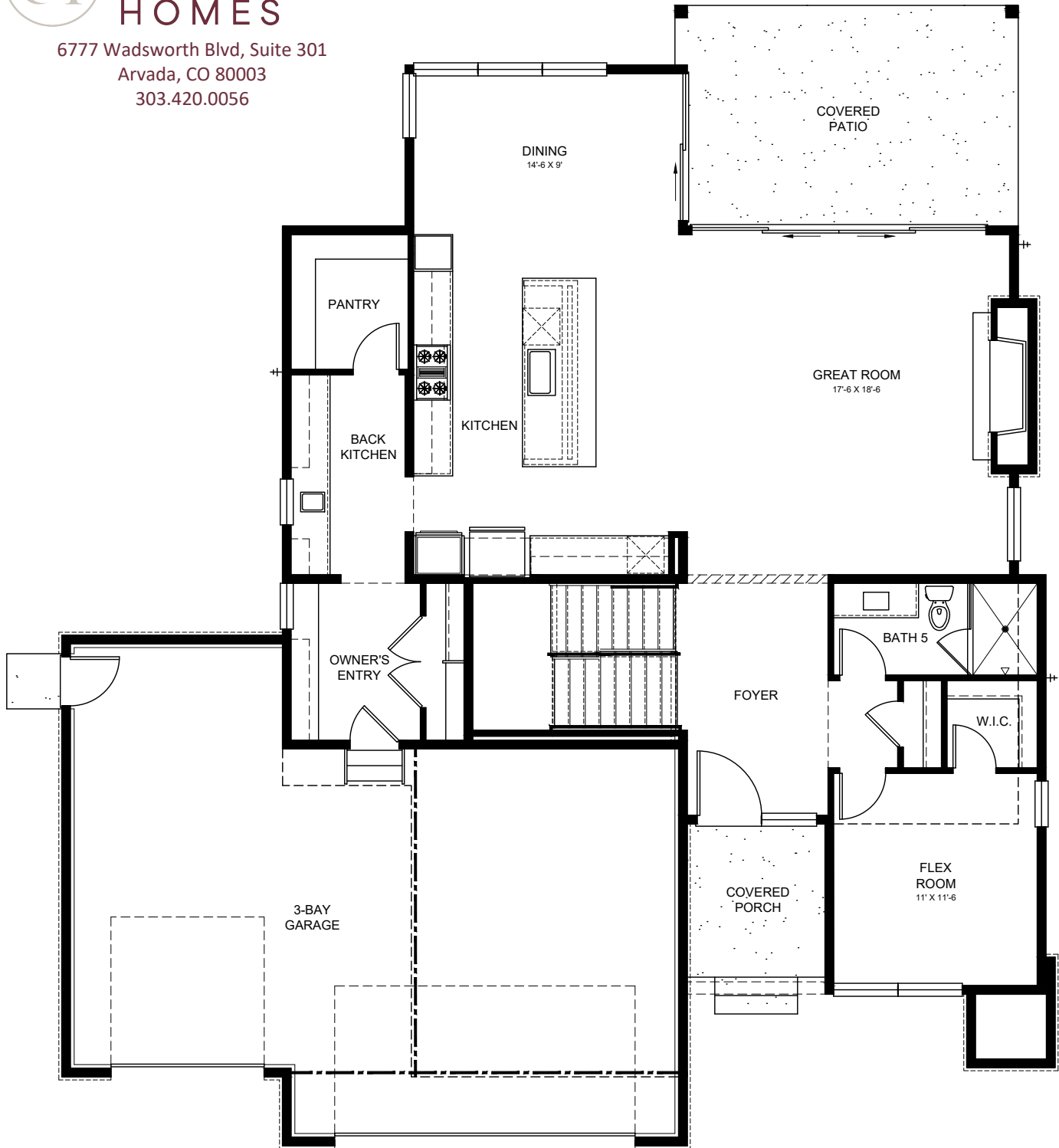
6777 Wadsworth Blvd, Suite 301  
Arvada, CO 80003  
303.420.0056



LOWER LEVEL FLOOR PLAN



6777 Wadsworth Blvd, Suite 301  
Arvada, CO 80003  
303.420.0056

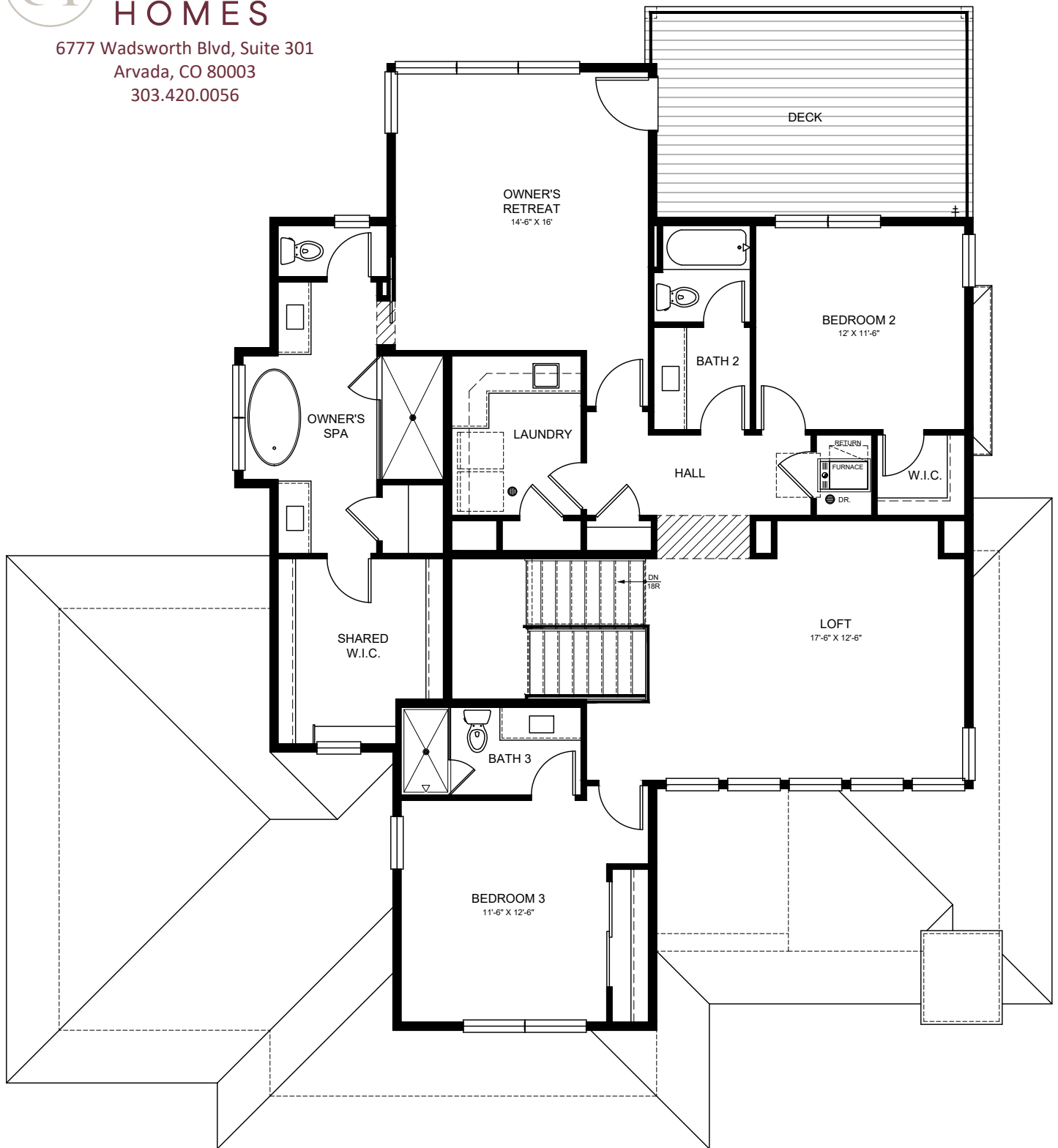


MAIN LEVEL FLOOR PLAN



# Sheffield HOMES

6777 Wadsworth Blvd, Suite 301  
Arvada, CO 80003  
303.420.0056



UPPER LEVEL FLOOR PLAN