

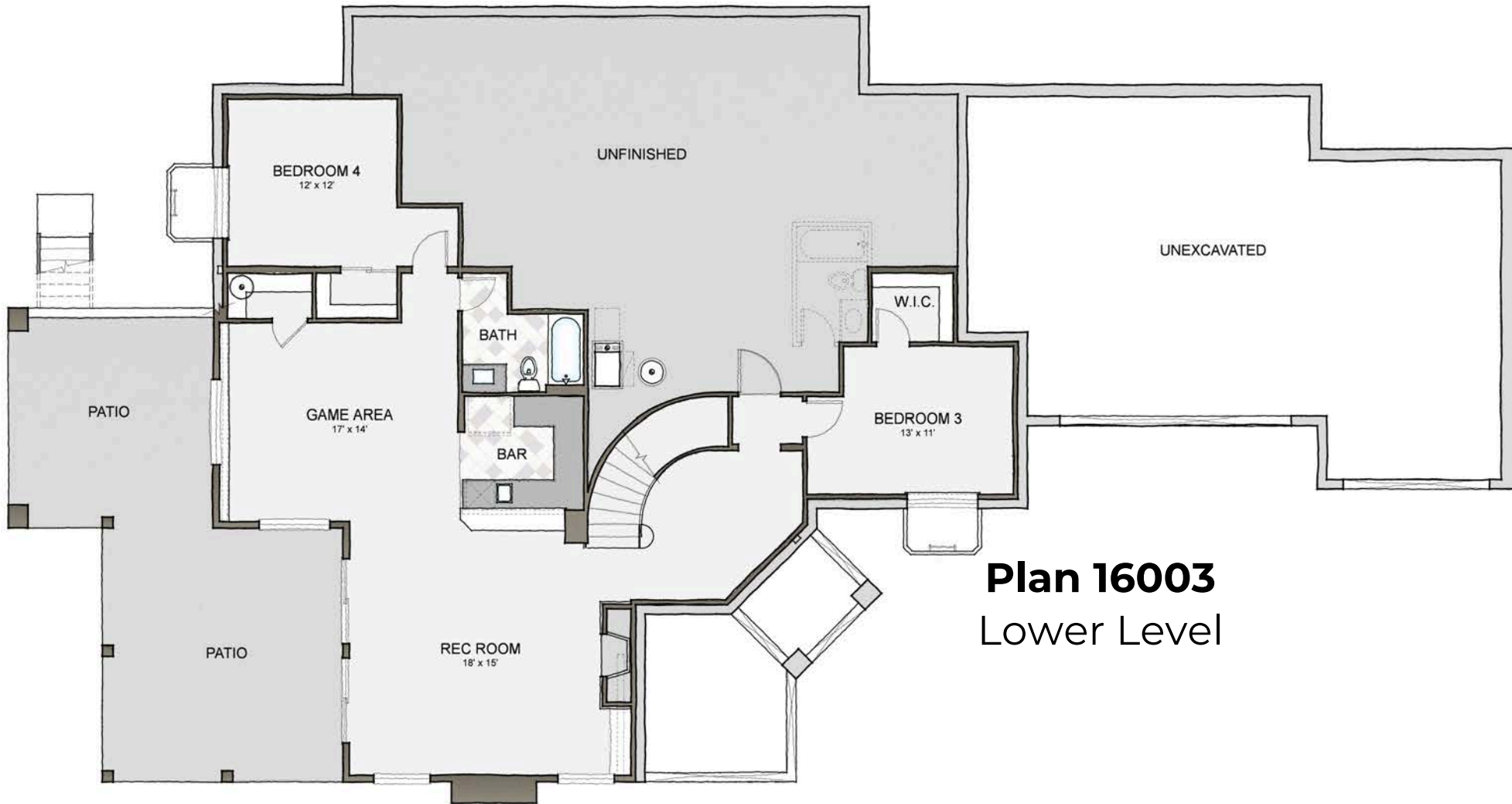


Sheffield  
HOMES

COLORADO ROOTS | CUSTOMER DRIVEN

SQUARE FOOTAGE CALC.	
MAIN LEVEL	2,333 SQ.FT.
LOWER LEVEL (FINISHED)	1,331 SQ.FT.
<b>TOTAL</b>	<b>3,664 SQ.FT.</b>
LOWER LEVEL (UNFINISHED)	907 SQ.FT.
LOWER LEVEL PATIO	310 SQ.FT.
GARAGE	903 SQ.FT.
DECK	528 SQ.FT.
FRONT PORCH	170 SQ.FT.

Plan 16003



**Plan 16003**  
Lower Level



**Plan 16003**  
Main Level